

HMF 810K-RC



The HMF 810K-RC is a versatile crane with low tare weight and high lifting capacity.



Main benefits

- Minimum space requirements
- Radio remote control system for total freedom
- Wear-resistant

A radio remote controlled crane for total freedom

The HMF 810K-RC is a flexible crane with full speed in the entire working area. The crane is fitted with a low tare weight compared with high lifting capacity, which ensures high loading capacity and efficiency during loading and unloading.

The crane is furthermore equipped with the HMF single Power Plus link arm system which e.g. ensures high working speed when loading and unloading with grab.

It also has an over-bending of 15° which means that it is capable of lifting the maximum capacity in the maximum over-bending position.

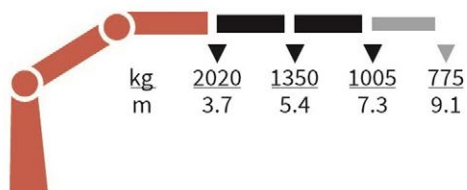
PERFORMANCE	810-K1	810-K2	810-K3	810-K4
Load Moment (tm)	7,6	7,5	7,3	7,1
Hydraulic reach (m)	5,3	7,3	9,1	11
Weight excl. stabilizers (Kg)	665	740	810	870
Weight of stabilizers, standard (Kg)	115	115	115	115
Lift-to-weight ratio	9,8	8,8	7,9	7,2
Slewing Angle (°)	400	400	400	400
Slewing torque (kgm)	840	840	840	840
Working pressure (bar)	325	325	325	325
GEOMETRY				
Height above mounting surface (mm)	1910	1910	1910	1910
Width, folded, standard (mm)	2220	2220	2220	2220
Length of crane, no extra valves (mm)	664	664	664	664

Lifting Capacity

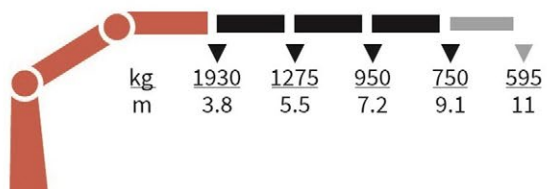
810-K1-RC



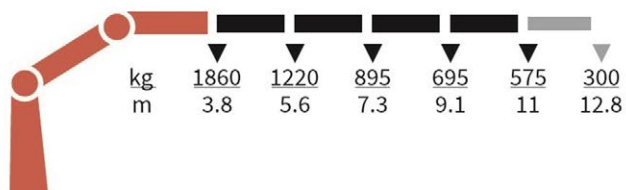
810-K2-RC



810-K3-RC



810-K4-RC



Basics and options

Basics

HMF 810K-RC

Single power plus link arm system
Proportional control valve PVG 16
Internal hose routing
Environmentally friendly quality coating
RCL safety system
Electronic speed adaptation, HDL-d

Options

Control systems	Fixed vertical stabilizer legs
Radio remote control Maxi	Footplate with ball joint
Radio remote control Mini	Footplate extended
Extra digital outputs	Colours
Electrical options	RAL colors
Spotlight	
Voltage	
HMF Connect	
Extra valves	
Extra valves in hose guides	
Extra valves in hose reels, internally led	
Hydraulic hoist	
Hydraulic hoist 1000	
Hydraulics	
Ball valve for tank	
Oil cooler, small	
2 manually controlled available stabilizer functions	
Biodegradable oil	
Oil tank 50 l mounted on the crane	
Temperature monitoring	
Mechanical options	
Manual extension	
Hook for manual extension	
Crane orientation	
Mounting bolt kit	
Fittings for mounting bolt kits	
Stability and safety	
Electronic vehicle stability - EVS	
AutoSwitch	
Cylinder limitation	
2-section Cylinder and beam limitation	
2CYBEL-I	
2-stage load moment limitation	
Preparation for alternative stability system	
Alarm flash on stabilizer legs	
Calibration bypass	
Light tower	
Beam and height warning	
Stabilizer leg warning	
Stabilizer beams and legs	
Manual stabilizer beams 3.4 m - 5.2 m	
Hydraulic stabilizer beams 4.4 m - 5.2 m	
Manual swing-up stabilizer legs with gas spring	
Manual swing-up stabilizer legs	