

HMF 4020K-RCS



The HMF 4020K-RCS has a low tare weight and reduced space requirements giving optimum vehicle payload.



Main benefits

- Extensive range of peripheral options available i.e. fly-jib or grab.
- Strength and operational safety
- Great flexibility and smooth operation for demanding tasks

All-round crane for heavy lifting tasks

The HMF 4020K-RCS is a radio remote controlled and versatile crane with many options that can be personalised to fit your exact crane needs.

The crane has a low tare weight and reduced space requirements which provide for maximum use of the truck body as well as savings on fuel.

Additionally, the crane can be delivered with HMF's load-dependent EVS system monitoring and ensuring stability.

The crane is furthermore designed to be service-friendly and equipped with internal hose routing, which makes it easy to maintain, and protects the crane against wear and tear. All this to ensure a low cost of ownership.

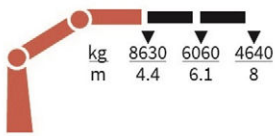
Why choose the 4020K?

- Suitable for many different tasks.
- The dual link arm system makes it possible both to manage heavy lifting close to the column as well as at a long distance and in high positions.

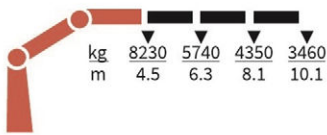
PERFORMANCE	4020-K2	4020-K3	4020-K4	4020-K5	4020-K6	4020-K7	4020-K8
Load Moment (tm)	38	37	35,9	34,9	34,7	33,9	33,7
Hydraulic reach (m)	8,1	10,1	12,2	14,35	16,6	18,95	21,3
Weight excl. stabilizers (Kg)	3150	3410	3660	3900	4080	4240	4400
Weight of stabilizers, standard (Kg)	470	470	470	470	470	470	470
Lift-to-weight ratio	10,5	9,5	8,7	8	7,6	7,2	6,9
Slewing Angle (°)	∞	∞	∞	∞	∞	∞	∞
Slewing torque (kgm)	4000	4000	4000	4000	4000	4000	4000
Working pressure (bar)	365	365	365	365	365	365	365
GEOMETRY							
Height above mounting surface (mm)	2384	2384	2384	2384	2384	2384	2384
Width, folded, standard (mm)	2518	2518	2518	2518	2518	2518	2518
Length of crane, no extra valves (mm)	1148	1148	1148	1148	1148	1274	1274

Lifting Capacity

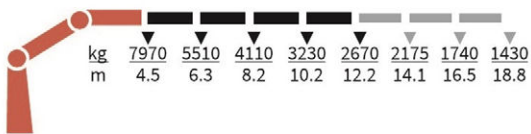
4020-K2-RCS



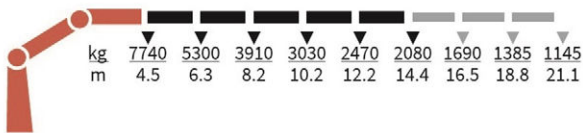
4020-K3-RCS



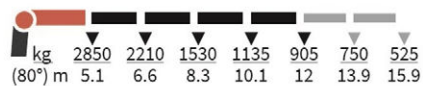
4020-K4-RCS



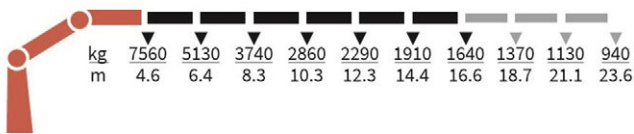
4020-K5-RCS



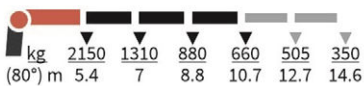
FJ1000-K4



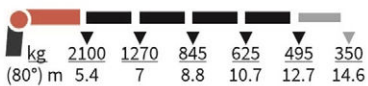
4020-K6-RCS



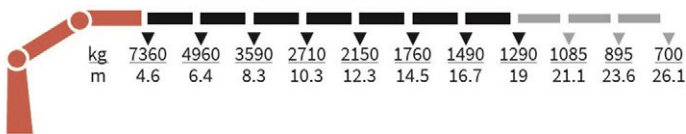
FJ600-K3



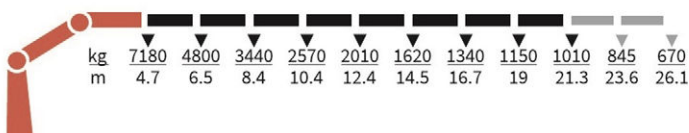
FJ600-K4



4020-K7-RCS



4020-K8-RCS



Basics and options

Basics

HMF 4020K-RCS

Electronic speed adaptation, HDL-d
Progressive crane control
Priority flow control
Dual Power plus link arm system
Proportional control valve PVG 32
Radio remote control of stabilizer beams and stabilizer legs on crane
Internal hose routing
Environmentally friendly quality coating
RCL safety system

Options

Control stations
Personnel basket on crane – MEWP
Control systems
Radio remote control Maxi
Radio remote control Mini
Radio remote control with Power display
Extra digital outputs
Electrical options
Spotlight
Voltage
HMF Connect
Extra valves
Extra valves in hose guides
Extra valves in hose reels, internally led
Extra valves in hose reels, externally led
Multi-coupling
Fly-jib
Fly-jib 1000
Fly-jib 600
Personnel basket on Fly-jib
Hydraulic hoist
Full hoist preparation
Hydraulic hoist 2500
Hydraulic hoist 3200
2-part snatch block
Hydraulics
Ball valve for tank
Oil cooler, medium
Oil cooler, large
1 radio remote controlled available proportional function
3rd extra valve
Biodegradable oil
Oil tank 250 l mounted on the crane
Temperature monitoring
Mechanical options
Manual extension
Shielding of load-holding valve
Protective guard at the rear of the jib
Mounting bolt kit
Fittings for mounting bolt kits

Stability and safety
Electronic vehicle stability - EVS
AutoSwitch
Cylinder limitation
2-section Cylinder and beam limitation
Limitation of working area – horizontal
2CYBEL-I
Cabin anti-crash
2-stage load moment limitation
Preparation for alternative stability system
Alarm flash on stabilizer legs
Calibration bypass
Light tower
Beam and height warning
Stabilizer leg warning
Stabilizer beams and legs
Hydraulic stabilizer beams 5.6 m - 7.8 m
Hydraulic swing-up stabilizer legs
Manual swing-up stabilizer legs
Fixed vertical stabilizer legs
Footplate with ball joint
Footplate extended
Colours
RAL colors