



For Earth, For Life
Kubota

SVL

KUBOTA COMPACT TRACK LOADER SVL75-3

Kubota Performance, Comfort and Reliability allow you to work faster, longer and more efficiently.



*This information is sourced from overseas and may not necessarily apply locally. It is essential that you confirm specifications and other information with your local Kubota dealer.



What is your request? More productivity More comfort? Less downtime?

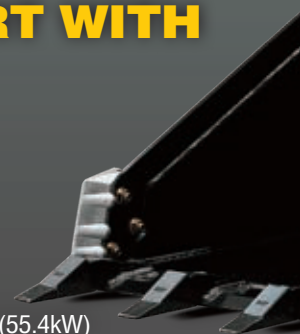
Here's the Compact Track Loader you've been waiting for. With a new hydraulic system, added technology and innovative features, the SVL75-3 satisfies a wide range of requests.

- **OUTSTANDING PERFORMANCE AND PRODUCTIVITY**
- **SPACIOUS OPERATOR ROOM AND COMFORT WITH ADVANCED MULTI FUNCTION OPERATION**
- **EASY MAINTENANCE**

COMPACT TRACK LOADER

SVL75-3

Engine gross horsepower (SAE J 1995): 74.3HP (55.4kW)
Rated operating capacity (35% of tipping load): 1129 kg
Bucket breakout force: 2808 kg
Operating weight
(Closed Cab. Including operator weight 75 kg): 4273 kg





vity?



Hydraulic System

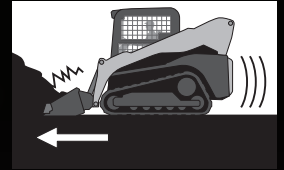


Advanced Multifunction Valve (AMV)

The SVL75-3's hydraulic system features an innovative Advanced Multifunction Valve that provides smooth movements of all hydraulic functions when operated simultaneously. The AMV now allows operators to run the AUX hydraulics, bucket, and loader arm functions together without stalling.

● Electronic Travel Torque Management

Electronic Travel Torque Management System lets you work faster with more power. The ECU constantly monitors the load of the machine to optimally control hydraulic pump output according to the load, preventing engine stalls for smoother operation even under severe conditions.



● Hydraulic Pilot Control

This ensures consistent oil flow which allows smooth and dependable operator control and stability.

-3 SERIES STYLE KUBOTA PRODUCT

With a new hydraulic system, reliable Kubota engine, efficient cooling fan management system, impressive travel performance, and more, the SVL75-3 is ready to take on any job.

Traveling Features

Faster Two-speed Travel

Shift from low gear at 9.0 km/h (1.5 km/h faster than SVL75-2) to high gear at 13.7 km/h (2.4 km/h faster than SVL75-2) to get the job done faster.

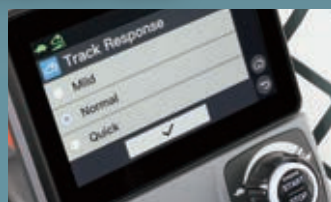
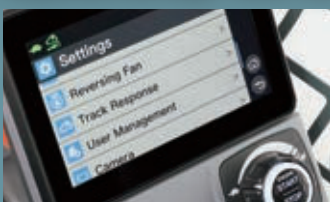
Auto-shift

The auto-shift system enables automatic travel shift from high to low when turning in order to travel smoothly.



Track Response

Operators now have the ability to change their travel response sensitivity through the use of the new LCD panel. The SVL75-3 offers you a choice of three track response settings: Mild, Normal, and Quick.



● Welded Mainframe and Under Carriage

1. Welded, Integrated Mainframe and Undercarriage

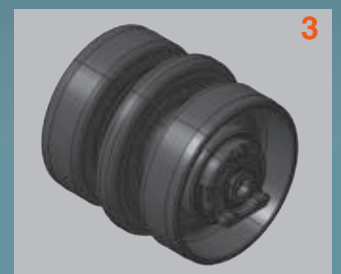
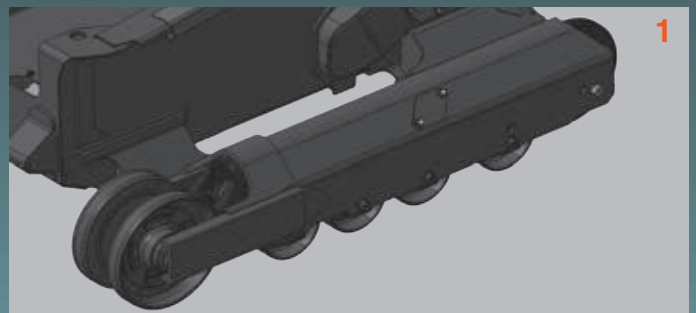
The undercarriage forms an integral part of the main frame for maximum durability.

2. Kubota Original Rubber Tracks

Kubota's original rubber tracks offer outstanding durability and long-life performance. Furthermore, Kubota's original lug pattern helps prevent soil from accumulating and improves traction force. 400 mm wide tracks are optional for the SVL75-3.

3. Triple Flange Lower Track Rollers

A reliable triple flange design helps minimize the chance of detracking and helps improve stability. They are lifetime sealed and lubricated.



Kubota Engine (Higher Maximum Torque)

New Kubota Engine (Higher Maximum Torque)

A reliable 74.3 HP* Kubota engine with higher maximum torque brings plenty of power for any task you may run into on the job site, letting you work faster and with greater efficiency. * Engine HP Gross (SAE J1995)

● Cooling Fan Management

The SVL75-3's new cooling fan management system reduces the engine's cooling fan power requirement during high-load work, making that power available for power-hungry tasks while keeping the cooling function.

● Cooling System and Variable Fan

A hydraulically driven fan optimizes cooling and engine efficiency by varying the fan speed to maintain the appropriate water and oil temperatures. In cold weather the fan turns more slowly, allowing for faster engine warm-up.



■ Fresh air ■ Hot air

TIVITY



Excellent Workability



SVL75-3
3117 mm

SVL75-2
3025 mm

Difference
92 mm

● Higher Hinge Pin Height

The tip of the arm is optimally shaped for a tall hinge pin height of 3117 mm making it easy to dump into any container or truck.

● Standard Self-leveling Function

This feature helps keep the bucket or fork in a horizontal position without the need to manually adjust the angle during lifting. Can be turned on or off with click of a switch.

● High-flow Hydraulics (Option)

Having high flow increases the hydraulic muscle for attachments that need more hydraulic horsepower. With this option auxiliary hydraulic flow increases to 112.8 l/min. The coupler manifold has both 1/2" and 3/4" couplers.



SPACIOUS OPERATOR SPACE AND COMFORT

New Cab, Technologies, A/C Performance make working in the most demanding conditions comfortable.



One-Piece Sealed and Pressurized Cab

The new one piece cab helps prevent dirt, dust, rain, and other debris from entering the operator space. Furthermore, noise is kept down to let you work for long hours with minimal fatigue.



New one-piece type



Conventional type

Sliding Front Door

The sliding front door can be opened regardless of the position of the bucket or loader arms. Full machine operation is possible with the door open if desired.

● LED Work Lights (Front and Rear)

LED lights allow to get job done easily in dark places or work during night.

● Wide Cab Entrance

A wide entrance makes it easier to get in and out.

● High Visibility Roof Panel

The larger upper windshield allows for increased operator visibility when dumping into containers or trucks.

Improved A/C Performance

The climate control system provides an optimized airflow for outstanding cooling and heating performance—and supreme operator comfort—all year round.



RATOR ROOM

Technology

Color LCD Touch Panel with Jog Dial

The SVL75-3's digital color LCD Touch Panel builds on the success of the Kubota's Intelligent Control System by providing a wide range of functions to keep you aware of the SVL75-3's operating status at all times. This new panel features touch and jog dial enabled controls for quickly selecting operations and functions, as well as easy-to-read indicators and alerts. The panel is positioned to the front right of the operator for excellent visibility and fast access.



- A.** Situation Indicator (such as working function, battery charge indicator etc..) **B.** Hydraulic Oil Temperature **C.** Coolant Temperature
D. AUX Mode **E.** Fuel Level **F.** Menu Icons



Rear View Camera

The standard rear view camera allows for better rear visibility on the job site. The rear view can be set to display constantly or only when the in reverse.



Keyless Engine Start

The engine can be started by entering a 4 digit passcode using LCD Touch Panel and up to 51 user passwords can be set. With this new feature, customers no longer have to worry about lost keys.



Radio with Bluetooth

Standard on Closed Cab units, our new integrated bluetooth radio allows for seamless bluetooth streaming and hands free calling.

EASY MAINTENANCE

Easier access to the engine compartment allows for easy and more efficient maintenance.

EASY MAINTENANCE

Top-mounted Radiator and Oil Cooler

Conveniently located on the top of the engine compartment, the radiator components are within easy reach for cleaning and routine maintenance.



- A. Dual Element Air Cleaner
- B. Fuel Filter
- C. Water Separator
- D. Coolant
- E. Battery

● Easier Engine Access

Wide range of the center cover can be removed.



● Tilt-up Cabin

The cab can be tilted 56.5° without having to lift the arm, allowing easy access to the hydraulic pumps, valves, lines and hydraulic tank.



ANCE



Equipment that Supports Easier Maintenance

1. Pre-cleaner

Keep dust and dirt away from the engine to reduce maintenance costs.

2. Reversing Fan

The SVL75-3's engine cooling fan periodically reverses direction, working with a fan mounted on the hood to help keep the engine free of dust and to ensure optimal air flow.

3. Door Enclosed Fuel Tank and Easy Refill Access

No need to open the door with lock. Simply lift a flap for quick and easy refueling.

4. Bigger Air Cleaner

The larger air cleaner helps prolong filter life and helps ensure a cleaner engine compartment.



EASY OPERATION



● Multi-function Levers

The multi-function levers provide fingertip control of all major vehicle and attachment operations, letting you keep both hands on the levers at all times for optimal operating efficiency. Standard on High-flow models, these levers can also be installed as an optional kit on Standard flow models.



- A. Horn
- B. -Not used-
- C. AUX1
- D. AUX3
- E. Travel Speed

- F. Proportional AUX Switch
- G. AUX Hold Switch
- H. AUX2
- I. AUX Mode Change
- J. Float Switch

● New Jog Dial and Switches

The new jog dial and switches are both intuitive and easy to use. Switch panel is back lit for working in dark conditions. Even first-time operators will be able to quickly access all important information.



- A. Home switch
- B. Return switch
- C. Jog dial
- D. Self leveling switch
- E. Working light switch
- F. Beacon light (Opt.) switch
- G. Washer switch (Closed Cab only)
- H. Hydraulic unlock switch
- I. Parking brake switch
- J. AUX port switch
- K. Wiper switch (Closed Cab only)



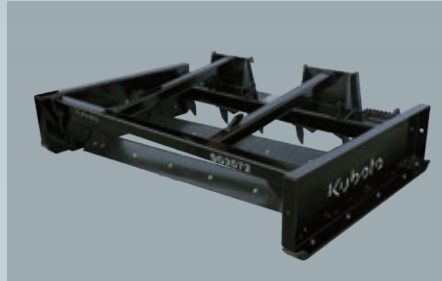
ATTACHMENTS

The SVL75-3 Compact Track Loader can connect to a variety of attachments, letting you take on a wide and diverse range of tasks.

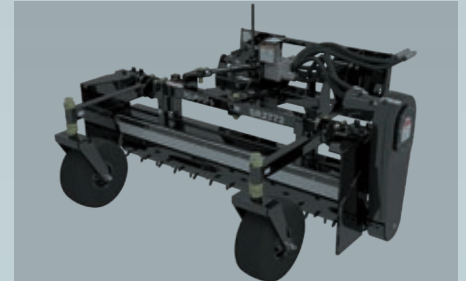
**Not all attachments are OEM-KUBOTA.*



■ Auger



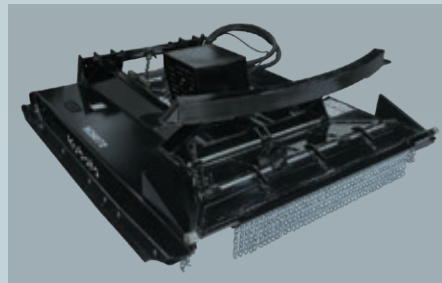
■ Skid Grader



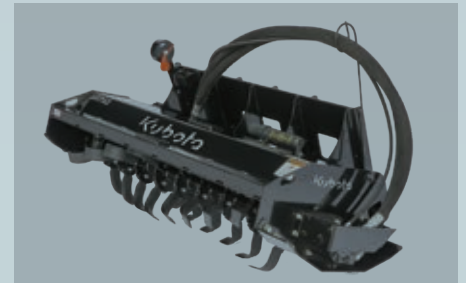
■ Power Rake



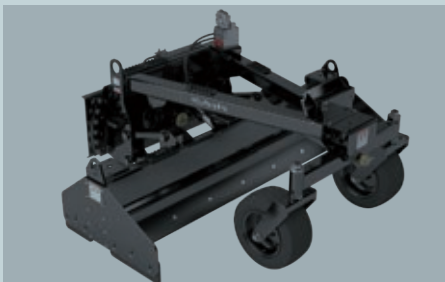
■ Hopper Broom



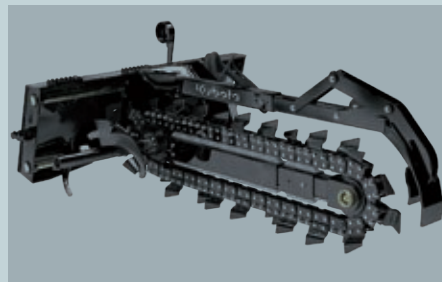
■ Rotary Cutter



■ Tiller



■ Box Blade



■ Trencher



■ Primary Seeder

- Angle Broom ■ Pallet Fork
- Breaker ■ Cold Planer
- Loader Boom

■ Polycarbonate Door (Option)

The polycarbonate door is available as an optional kit and is recommended for some attachments.

EQUIPMENT

STANDARD EQUIPMENT

- Closed CAB (w/ air conditioning)
- Top / Rear window
- 2" Retractable seat belt
- Operator presence control
- Pull down arm rest
- LCD touch panel with jog dial
- Dial and Foot throttle
- Rear view camera
- Keyless engine start
- Rear view mirror
- 12V electric outlet
- USB port
- Radio with bluetooth
- Reversing fan
- Hydraulic quick coupler
- LED work lights (Front 2 / Rear 2)
- Horn
- Backup alarm
- Glow plug
- Bucket self-leveling (up only)
- Wet disc parking brake
- Two-speed travel
- Track Response
- Rubber crawler (320mm)
- Pre-cleaner
- Door enclosed fuel filler port
- Air filter warning indicator

OPTIONAL EQUIPMENT

- High-flow hydraulics* (1/2" and 3/4" couplers)*
- 14-pin coupler (standard on high flow model)
- Rubber crawler (400mm)*
- Polycarbonate door
- Rear bonnet lock kit
- Air suspension seat
- Arm cylinder boots kit

*Factory Option

Specifications

Model			SVL75-3	
Type of operator station			Closed CAB	
Engine	Model		V3307-TE5A-CTL-Q	
	Output (SAE J1995 gross)	HP (kW) / rpm	74.3 (55.4) / 2400	
	Output (SAE J1349 net)	HP (kW) / rpm	73.2 (54.6) / 2400	
	Displacement	cc	3331	
	Cylinders		4	
	Bore × Stroke	mm	94 × 120	
	Aspiration		Turbocharged	
Loader Performance	Rated operating capacity-35% tipping load		kg	1129
	Tipping load		kg	3226
	Breakout force	Bucket	kg	2808
		Lift arm	kg	2142
Undercarriage	Track Width	Standard	mm	320
		Wide	mm	400
	Ground pressure	Standard	psi	5.9
		Wide	psi	4.8
	Track rollers (per side)			4
	Track ground contact length		mm	1436
	Travel speed	Low	km/h	9.0
		High	km/h	13.7
Hydraulic system	Traction force		kgf	4390
	Min. ground clearance		mm	296
	Aux. hydraulic flow	Std. / High Flow	ℓ/min.	72.7 / 112.8
Service refill capacities	Aux. hydraulic pressure		kgf/cm ²	224
	Hydraulic system		ℓ	46
	Hydraulic tank		ℓ	16.1
Operating weight (Includes operator weight 75 kg.)	Fuel tank		ℓ	94.6
			kg	4273

The company reserves the right to change the above specifications without notice. This brochure is for descriptive purposes only. Please contact your local Kubota dealer for warranty information. For your safety, Kubota strongly recommends the use of a Rollover Protective Structure (ROPS) and seat belt in almost all applications.

Dimensions

The diagram illustrates the dimensions of the Kubota SVL75-3 skid steer loader. It includes a top-down view showing the track length (A), track gauge (B), length without bucket (C), and length with bucket on ground (D). The side view shows the height to the top of the cab (E), bucket hinge pin height at max. lift (F), rollback angle at carry position (G), reach at max. lift and dump (H), ground clearance (I), departure angle (J), max. dump angle (K), vehicle width for standard and wide tracks (L), width with bucket (M), and turning radius from center-machine rear (N).

Model			SVL75-3
A	Length of track on ground	mm	1436
B	Track gauge	mm	1355
C	Length w/o bucket	mm	2844
D	Length w/bucket on ground	mm	3609
E	Height to top of cab	mm	2078
F	Bucket hinge pin height at max. lift	mm	3117
G	Rollback angle at carry position	degree	27
H	Reach at max. lift and dump	mm	1007
I	Ground clearance	mm	296
J	Departure angle	degree	31.1
K	Max. dump angle	degree	38.5
L	Vehicle width Standard track / Wide track	mm	1675 / 1755
M	Width with bucket	mm	1717
N	Turning radius from center-machine rear	mm	2936

©2023 Kubota Corporation

Kubota Australia Pty Ltd

25-29 Permas Way, Truganina VIC, 3029 Australia
Freecall: 1800-334-653
Email: sales@kubota.com.au

Web Site: <http://www.kubota.com.au>

Kubota New Zealand Limited

433 Rangitikei Street, Cloverlea, Palmerston North, 4412 New Zealand
Freecall: 0800-582-682
Email: sales@kubota.com.au

Web Site: <http://www.kubota.co.nz>

Kubota

Genuine Parts

for maximum performance, durability and safety

Cat. No.8990A-01-AA Printed in Japan '23-07D. <1.5