

HYDRAULIC EXCAVATOR

ENGINE

Model	Isuzu AM-4HK1X Cooled EGR
Emissions Certification	Tier 4 Interim
Fuel	Requires ultra-low sulfur fuel B5 biodiesel tolerant
Type	Water-cooled, 4-cycle, high pressure common rail system. Turbo-charged w/ air cooled intercooler, DPD system
Cylinders	4-cylinder in-line
Displacement	317 in ³ (5.2 L)
Bore/Stroke	5 x 5 in (115 x 125 mm)
Fuel injection	Direct injection – electronic
Fuel filter	Replaceable, full flow spin-on cartridge
Air filter	Dry type element w/ warning restriction indicator
Oil filter	Replaceable, full flow spin-on cartridge
Engine gradeability:	
Side-to-side	35°
Fore and aft	35°
Net horsepower – SAE J1349 @ 2000 RPM:	177 hp (132.1 kW)
Net max. torque – SAE J1349 @ 1800 RPM:	458 lb-ft (621 N·m)
Cooling operating range:	109° to -13°F (43° to -25°C)
Oil	Requires low-ash oil CJ-4

DRIVETRAIN

Travel control	Dual stage relief/ counter balance design
Brakes	Mechanical disc
Service brakes	SAHR disc – each motor
Two speed travel:	
Max. high speed	3.4 mph (5.5 kph)
Max. low speed	2.0 mph (3.2 kph)
Automatic downshift	
Drawbar pull	45,187 lbf (201 kN)
Gradeability	70% – 35° Slope

ELECTRICAL

Voltage	24 Volts
Alternator rating	50 amp
Batteries	2 x 12-Volt
Battery reserve capacity	92 Ah / 5 hour
Work lights	24 Volt
1 boom	70 watt
1 upper	70 watt

CAB AND CONTROLS

Air conditioner output	18,100 BTU/hr
Heater output	20,150 BTU/hr
Sound level inside cab – ISO6395	70 dBA
Electrical outlet	12 Volt
Cab interior light	10 watt
Rear view camera	Standard
Seat	Air-suspension

ATTACHMENTS

Boom	19 ft 2 in (5 850 mm)
Arm options:	
	9 ft 10 in (3 000 mm)
	11 ft 7 in (3 520 mm)
Heavy Duty	8 ft 2 in (2 500 mm)
Bucket digging force*	36,419 lbf (162 kN)
w/ Auto Power-Boost	39,117 lbf (174 kN)

NOTE: *Digging force ratings based on ISO6015

OPERATING WEIGHT

Operating weight	55,336 lb (25 100 kg)
w/ shoes	2 ft 7 in (800 mm)
w/ boom	19 ft 2 in (5 850 mm)
w/ arm	9 ft 10 in (3 000 mm)
w/ bucket	1,786 lb (810 kg)
w/ counterweight	11,905 lb (5 400 kg)

NOTE: w/ operator/full fuel/standard equipment

GROUND PRESSURE

@ Standard operating weight	5.1 psi (0.35 bar)
w/ 31.5 in (800 mm) triple semi-grouser shoes	

HYDRAULICS

System design	Open center
Main pumps	Two-variable displacement/ axial piston
Max. rated flow	61.8 gpm (234 L/min)
System pressures:	
Boom, arm and bucket	4,975 psi (343 bar)
w/ power boost	5,337 psi (368 bar)
Travel circuits	4,975 psi (343 bar)
Swing circuits	4,192 psi (289 bar)
Pilot pump	1 x gear design
Max. capacity	5.3 gpm (20 L/min)
Controls	w/ boom/arm holding valve
Right track travel, bucket, boom and arm acceleration.	Four-spool section
Left track travel, bucket, boom and arm acceleration.	Five-spool section

HYDRAULICS (cont.)

Work mode selections	SP: Speed Priority H: Heavy Duty A: Automatic
Swing motor	Fixed displacement axial piston
Swing final drive	Planetary gear reduction
Travel motor	Two-speed independent travel/axial piston

HYDRAULIC CYLINDERS

Boom cylinders	Two (2)
Cylinder bore	5.1 in (130 mm)
Cylinder rod diameter	3.5 in (90 mm)
Cylinder stroke	52.6 in (1 335 mm)
Arm cylinder	One (1)
Cylinder bore	5.7 in (145 mm)
Cylinder rod diameter	4.1 in (105 mm)
Cylinder stroke	65.4 in (1 660 mm)
Bucket cylinder	One (1)
Cylinder bore	5.1 in (130 mm)
Cylinder rod diameter	3.5 in (90 mm)
Cylinder stroke	42.1 in (1 070 mm)

SERVICE CAPACITIES

Fuel tank	108 gal (410 L)
Hydraulic system	66 gal (250 L)
Hydraulic tank	39 gal (147 L)
Engine oil w/ filter	8 gal (29.6 L)
Swing drive	10.2 qt (9.7 L)
Final drive – each side	5.3 qt (5 L)
Cooling system	8 gal (30.2 L)

OTHER SPECIFICATIONS

Swing speed	0 – 10.6 RPM
Swing torque	55,243 lb-ft (74 900 N·m)
Swing brake	Mechanical disc
Undercarriage:	
Length	15 ft 3 in (4 650 mm)
Track gauge	8 ft 6 in (2 600 mm)
Carrier rollers	2
Track rollers	9
Shoes – triple grouser	51
Shoe width – std.	2 ft 7 in (800 mm)
Link pitch	7 in (190 mm)
Track:	
Chain	Grease lubricated/strutted
Guides	Single
Adjustment	Hydraulic

LIFT CAPACITIES

9 ft 10 in (3.0 m) Lift capacities using a 1,800 lb (810 kg) bucket, 11,900 lb (5 400 kg) counterweight.

Load (Lift Point Height)	5 ft (1.5 m)		10 ft (3 m)		15 ft (4.5 m)		20 ft (6 m)		25 ft (7.5 m)		30 ft (9 m)		MAXIMUM REACH		
	END	SIDE	END	SIDE	END	SIDE	END	SIDE	END	SIDE	END	SIDE	@	END	SIDE
+25 ft (7.5 m)									8,450 lb* (3 833 kg)*	8,450 lb* (3 833 kg)*			26 ft 8 in (8.13 m)	5,250 lb* (2 381 kg)*	5,250 lb* (2 381 kg)*
+20 ft (6 m)									10,400 lb* (4 717 kg)*	10,150 lb* (4 604 kg)			29 ft 9 in (9.07 m)	4,950 lb* (2 245 kg)*	4,950 lb* (2 245 kg)*
+15 ft (4.5 m)							13,200 lb* (5 987 kg)*	13,200 lb* (5 987 kg)*	12,100 lb* (5 488 kg)*	9,850 lb* (4 468 kg)	9,000 lb* (4 082 kg)*	7,050 lb* (3 198 kg)	31 ft 7 in (9.63 m)	4,900 lb* (2 223 kg)*	4,900 lb* (2 223 kg)*
+10 ft (3 m)			28,450 lb* (12 905 kg)*	28,450 lb* (12 905 kg)*	20,700 lb* (9 389 kg)*	20,700 lb* (9 389 kg)*	15,950 lb* (7 235 kg)*	13,700 lb* (6 214 kg)	13,500 lb* (6 123 kg)*	9,450 lb* (4 286 kg)	10,450 lb* (4 740 kg)*	6,900 lb* (3 130 kg)	32 ft 6 in (9.91 m)	5,050 lb* (2 291 kg)*	5,050 lb* (2 291 kg)*
+5 ft (1.5 m)			21,900 lb* (9 934 kg)*	21,900 lb* (9 934 kg)*	25,650 lb* (11 635 kg)*	20,150 lb* (9 140 kg)	18,550 lb* (8 414 kg)*	12,900 lb* (5 851 kg)	13,800 lb* (6 260 kg)	9,050 lb* (4 105 kg)	10,250 lb* (4 649 kg)	6,650 lb* (3 016 kg)	32 ft 5 in (9.88 m)	5,350 lb* (2 427 kg)*	5,350 lb* (2 427 kg)*
Groundline			20,800 lb* (9 435 kg)*	20,800 lb* (9 435 kg)*	28,400 lb* (12 882 kg)*	19,050 lb* (8 641 kg)	19,250 lb* (8 732 kg)	12,300 lb* (5 579 kg)	13,450 lb* (6 101 kg)	8,700 lb* (3 946 kg)	10,050 lb* (4 559 kg)	6,500 lb* (2 948 kg)	31 ft 7 in (9.63 m)	5,850 lb* (2 654 kg)*	5,850 lb* (2 654 kg)*
-5 ft (-1.5 m)	19,600 lb* (8 890 kg)*	19,600 lb* (8 890 kg)*	26,350 lb* (11 952 kg)*	26,350 lb* (11 952 kg)*	28,850 lb* (13 086 kg)*	18,700 lb* (8 482 kg)	18,850 lb* (8 550 kg)	12,000 lb* (5 443 kg)	13,250 lb* (6 010 kg)	8,550 lb* (3 878 kg)			29 ft 11 in (9.12 m)	6,750 lb* (3 062 kg)*	6,500 lb* (2 948 kg)
-10 ft (-3 m)	24,250 lb* (11 000 kg)*	24,250 lb* (11 000 kg)*	35,550 lb* (16 125 kg)*	35,550 lb* (16 125 kg)*	28,050 lb* (12 723 kg)*	18,850 lb* (8 550 kg)	18,900 lb* (8 573 kg)	12,050 lb* (5 466 kg)	13,400 lb* (6 078 kg)	8,700 lb* (3 946 kg)			27 ft 3 in (8.33 m)	8,300 lb* (3 765 kg)*	7,550 lb* (3 425 kg)
-15 ft (-4.5 m)	33,600 lb* (15 241 kg)*	33,600 lb* (15 241 kg)*	36,300 lb* (16 465 kg)*	36,300 lb* (16 465 kg)*	25,050 lb* (11 362 kg)*	19,300 lb* (8 754 kg)	18,150 lb* (8 233 kg)*	12,550 lb* (5 693 kg)					23 ft 4 in (7.11 m)	11,650 lb* (5 284 kg)*	9,800 lb* (4 445 kg)
-20 ft (-6 m)			25,500 lb* (11 567 kg)*	25,500 lb* (11 567 kg)*	17,300 lb* (7 847 kg)*	17,300 lb* (7 847 kg)*							17 ft 2 in (5.23 m)	13,650 lb* (6 192 kg)*	13,650 lb* (6 192 kg)*

8 ft 2 in (2.5 m) Lift capacities using a 1,900 lb (870 kg) bucket, 11,900 lb (5 400 kg) counterweight.

Load (Lift Point Height)	5 ft (1.5 m)		10 ft (3 m)		15 ft (4.5 m)		20 ft (6 m)		25 ft (7.5 m)		30 ft (9 m)		MAXIMUM REACH		
	END	SIDE	END	SIDE	END	SIDE	END	SIDE	END	SIDE	END	SIDE	@	END	SIDE
+25 ft (7.5 m)													24 ft 9 in (7.54 m)	7,550 lb* (3 425 kg)*	7,550 lb* (3 425 kg)*
+20 ft (6 m)							12,700 lb* (5 761 kg)*	12,700 lb* (5 761 kg)*	11,450 lb* (5 194 kg)*	9,900 lb* (4 491 kg)			28 ft 1 in (8.56 m)	7,150 lb* (3 243 kg)*	7,150 lb* (3 243 kg)*
+15 ft (4.5 m)					12,550 lb* (5 693 kg)*	12,550 lb* (5 693 kg)*	14,300 lb* (6 486 kg)*	13,900 lb* (6 305 kg)	12,950 lb* (5 874 kg)*	9,600 lb* (4 354 kg)	7,300 lb* (3 311 kg)*	6,850 lb* (3 107 kg)	30 ft 0 in (9.14 m)	7,100 lb* (3 221 kg)*	6,800 lb* (3 084 kg)
+10 ft (3 m)			32,400 lb* (14 696 kg)*	32,400 lb* (14 696 kg)*	21,800 lb* (9 888 kg)*	20,950 lb* (9 503 kg)	16,800 lb* (7 620 kg)*	13,350 lb* (6 055 kg)	13,900 lb* (6 305 kg)*	9,250 lb* (4 196 kg)	10,300 lb* (4 672 kg)	6,700 lb* (3 039 kg)	30 ft 11 in (9.42 m)	7,250 lb* (3 289 kg)*	6,300 lb* (2 858 kg)
+5 ft (1.5 m)					26,000 lb* (11 793 kg)*	19,650 lb* (8 913 kg)	19,150 lb* (8 686 kg)*	12,650 lb* (5 738 kg)	13,650 lb* (6 192 kg)	8,900 lb* (4 037 kg)	10,100 lb* (4 581 kg)	6,550 lb* (2 971 kg)	30 ft 11 in (9.42 m)	7,650 lb* (3 470 kg)*	6,200 lb* (2 812 kg)
Groundline			19,050 lb* (8 641 kg)*	19,050 lb* (8 641 kg)*	28,750 lb* (13 041 kg)*	18,750 lb* (8 505 kg)	19,000 lb* (8 618 kg)	12,100 lb* (5 488 kg)	13,300 lb* (6 033 kg)	8,600 lb* (3 901 kg)	8,700 lb* (3 946 kg)*	6,450 lb* (2 926 kg)	30 ft 1 in (9.17 m)	8,350 lb* (3 787 kg)*	6,400 lb* (2 903 kg)
-5 ft (-1.5 m)	21,400 lb* (9 707 kg)*	21,400 lb* (9 707 kg)*	26,950 lb* (12 224 kg)*	26,950 lb* (12 224 kg)*	28,650 lb* (12 995 kg)*	18,600 lb* (8 437 kg)	18,750 lb* (8 505 kg)	11,900 lb* (5 398 kg)	13,200 lb* (5 987 kg)	8,500 lb* (3 856 kg)			28 ft 3 in (8.61 m)	9,650 lb* (4 377 kg)*	7,050 lb* (3 198 kg)
-10 ft (-3 m)	26,800 lb* (12 156 kg)*	26,800 lb* (12 156 kg)*	39,250 lb* (17 804 kg)*	37,200 lb* (16 874 kg)*	27,250 lb* (12 360 kg)*	18,850 lb* (8 550 kg)	18,900 lb* (8 573 kg)	12,100 lb* (5 488 kg)	13,400 lb* (6 078 kg)	8,700 lb* (3 946 kg)			25 ft 5 in (7.75 m)	12,100 lb* (5 488 kg)*	8,400 lb* (3 810 kg)
-15 ft (-4.5 m)			33,000 lb* (14 969 kg)*	33,000 lb* (14 969 kg)*	23,150 lb* (10 501 kg)*	19,500 lb* (8 845 kg)	16,200 lb* (7 348 kg)*	12,650 lb* (5 738 kg)					21 ft 2 in (6.45 m)	14,100 lb* (6 396 kg)*	11,350 lb* (5 148 kg)

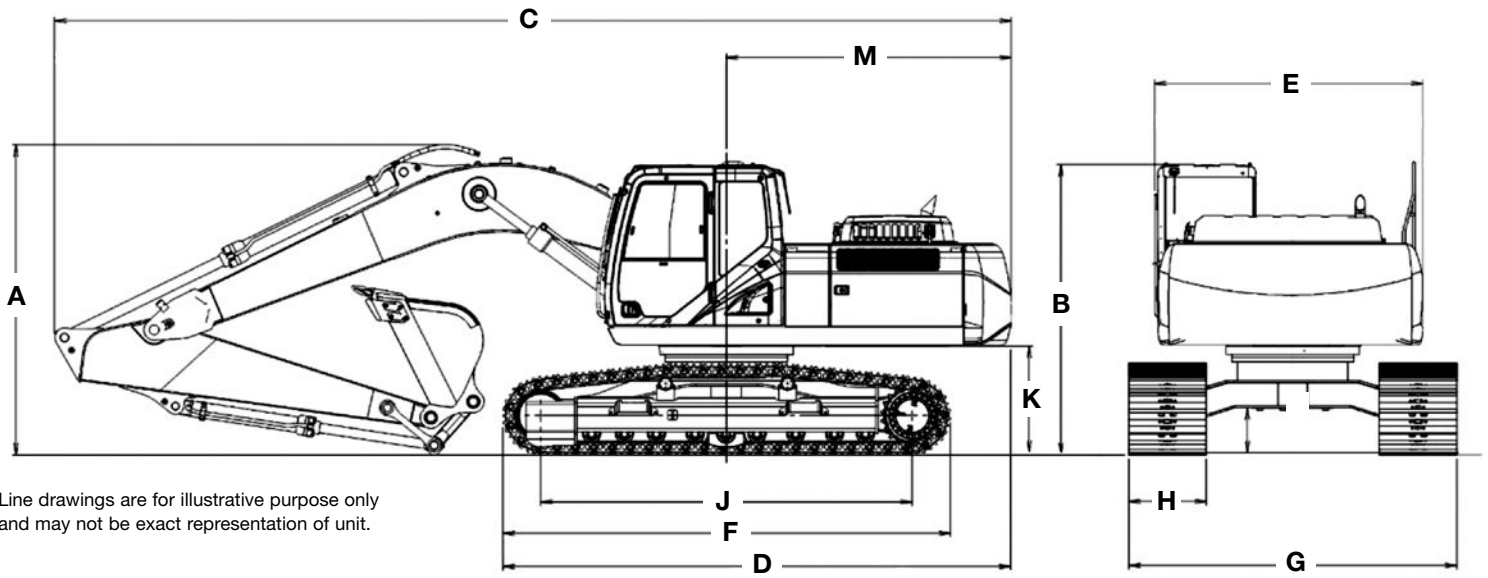
NOTE: *Following number indicates hydraulic capacity.

LIFT CAPACITIES

11 ft 6 in (3.52 m) Lift capacities using a 1,750 lb (790 kg) bucket, 11,900 lb (5 400 kg) counterweight.

Load (Lift Point Height)	5 ft (1.5 m)		10 ft (3 m)		15 ft (4.5 m)		20 ft (6 m)		25 ft (7.5 m)		30 ft (9 m)		MAXIMUM REACH			
	END	SIDE	END	SIDE	END	SIDE	END	SIDE	END	SIDE	END	SIDE	@	END	SIDE	
+25 ft (7.5 m)										7,150 lb* (3 243 kg)*	7,150 lb* (3 243 kg)*			28 ft 9 in (8.76 m)	4,200 lb* (1 905 kg)*	4,200 lb* (1 905 kg)*
+20 ft (6 m)										9,200 lb* (4 173 kg)*	9,200 lb* (4 173 kg)*	7,000 lb* (3 175 kg)*	7,000 lb* (3 175 kg)*	31 ft 7 in (9.63 m)	3,950 lb* (1 792 kg)*	3,950 lb* (1 792 kg)*
+15 ft (4.5 m)										11,250 lb* (5 103 kg)*	10,000 lb (4 536 kg)	9,000 lb* (4 082 kg)*	7,150 lb (3 243 kg)	33 ft 4 in (10.16 m)	3,900 lb* (1 769 kg)*	3,900 lb* (1 769 kg)*
+10 ft (3 m)					18,700 lb* (8 482 kg)*	18,700 lb* (8 482 kg)*	14,800 lb* (6 713 kg)*	13,800 lb (6 260 kg)		12,600 lb* (5 715 kg)*	9,550 lb (4 332 kg)	10,500 lb (4 763 kg)	6,900 lb (3 130 kg)	34 ft 2 in (10.41 m)	4,000 lb* (1 814 kg)*	4,000 lb* (1 814 kg)*
+5 ft (1.5 m)			31,650 lb* (14 356 kg)*	31,650 lb* (14 356 kg)*	23,950 lb* (10 864 kg)*	20,500 lb (9 299 kg)	17,600 lb* (7 983 kg)*	13,050 lb (5 919 kg)	13,850 lb* (6 282 kg)*	9,100 lb (4 128 kg)	10,250 lb (4 649 kg)	6,650 lb (3 016 kg)		34 ft 1 in (10.39 m)	4,200 lb* (1 905 kg)*	4,200 lb* (1 905 kg)*
Groundline	9,450 lb* (4 286 kg)*	9,450 lb* (4 286 kg)*	21,850 lb* (9 911 kg)*	21,850 lb* (9 911 kg)*	27,500 lb* (12 474 kg)*	19,200 lb (8 709 kg)	19,200 lb (8 709 kg)	12,350 lb (5 602 kg)	13,450 lb (6 101 kg)	8,700 lb (3 946 kg)	10,000 lb (4 536 kg)	6,450 lb (2 926 kg)		33 ft 4 in (10.16 m)	4,650 lb* (2 109 kg)*	4,650 lb* (2 109 kg)*
-5 ft (-1.5 m)	16,550 lb* (7 507 kg)*	16,550 lb* (7 507 kg)*	25,200 lb* (11 431 kg)*	25,200 lb* (11 431 kg)*	28,700 lb* (13 018 kg)*	18,550 lb (8 414 kg)	18,800 lb (8 528 kg)	11,900 lb (5 398 kg)	13,150 lb (5 965 kg)	8,450 lb (3 833 kg)	9,900 lb (4 491 kg)	6,350 lb (2 880 kg)		31 ft 9 in (9.68 m)	5,300 lb* (2 404 kg)*	5,300 lb* (2 404 kg)*
-10 ft (-3 m)	21,700 lb* (9 843 kg)*	21,700 lb* (9 843 kg)*	32,400 lb* (14 696 kg)*	32,400 lb* (14 696 kg)*	28,300 lb* (12 837 kg)*	18,550 lb (8 414 kg)	18,700 lb (8 482 kg)	11,850 lb (5 375 kg)	13,200 lb (5 987 kg)	8,450 lb (3 833 kg)				29 ft 3 in (8.92 m)	6,450 lb* (2 926 kg)*	6,450 lb* (2 926 kg)*
-15 ft (-4.5 m)	32,000 lb* (14 515 kg)*	32,000 lb* (14 515 kg)*	38,700 lb* (17 554 kg)*	37,850 lb (17 168 kg)	26,200 lb* (11 884 kg)*	18,950 lb (8 596 kg)	18,750 lb (8 505 kg)	12,200 lb (5 534 kg)	12,400 lb* (5 625 kg)*	8,750 lb (3 969 kg)				25 ft 7 in (7.80 m)	8,650 lb* (3 924 kg)*	8,350 lb (3 787 kg)
-20 ft (-6 m)			30,100 lb* (13 653 kg)*	30,100 lb* (13 653 kg)*	20,650 lb* (9 367 kg)*	19,300 lb (8 754 kg)	13,450 lb* (6 101 kg)*	12,500 lb (5 670 kg)						20 ft 3 in (6.17 m)	12,800 lb* (5 806 kg)*	12,250 lb (5 557 kg)

NOTE: *Following number indicates hydraulic capacity.

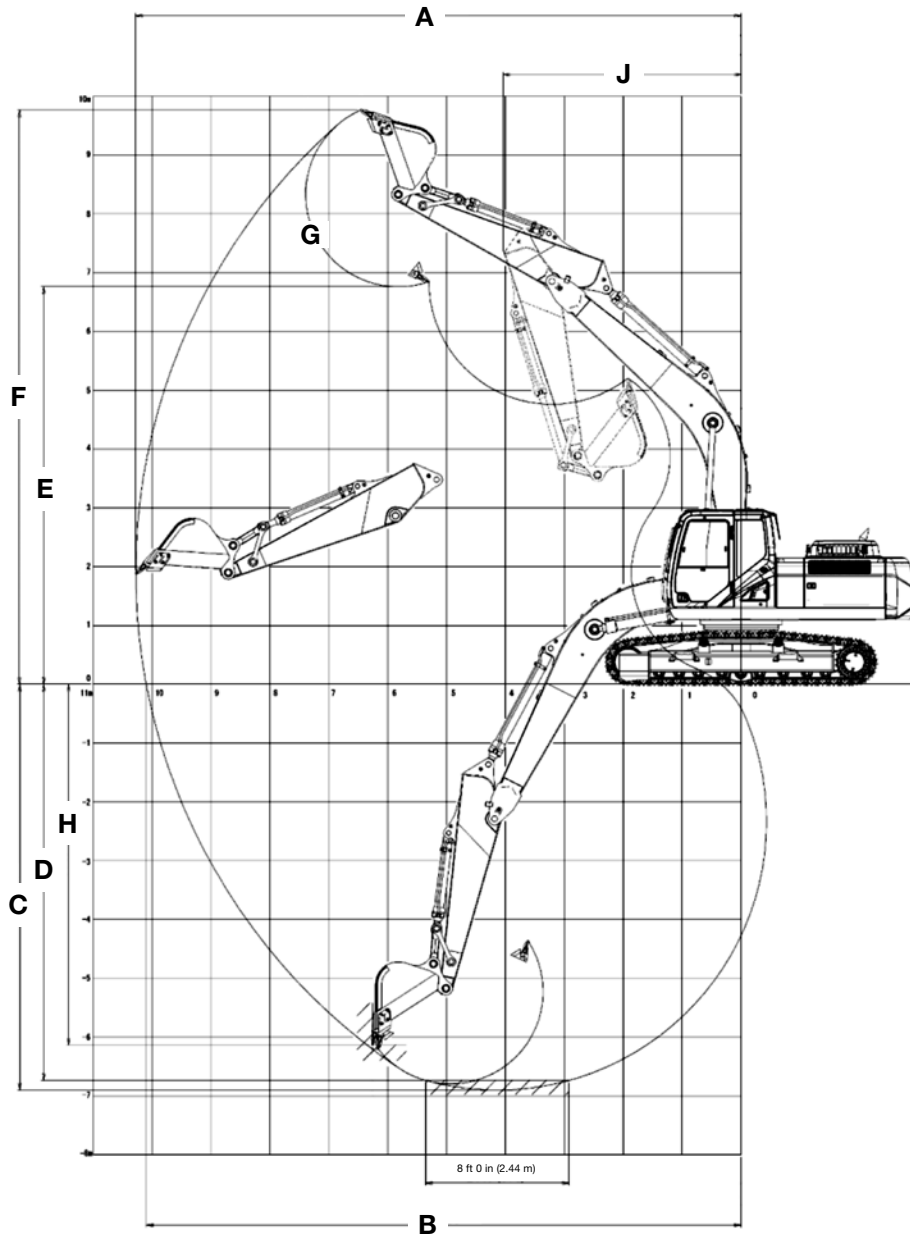


Line drawings are for illustrative purpose only and may not be exact representation of unit.

DIMENSIONS

	9 ft 10 in (3.0 m) Arm	8 ft 2 in (2.5 m) Arm	11 ft 6 in (3.52 m) Arm
A. Overall height – with attachment	10 ft 6 in (3 200 mm)	11 ft 0 in (3 350 mm)	11 ft 0 in (3 360 mm)
B. Cab height	10 ft 0 in (3 050 mm)	10 ft 0 in (3 050 mm)	10 ft 0 in (3 050 mm)
C. Overall length – with attachment	32 ft 5 in (9 880 mm)	32 ft 8 in (9 950 mm)	32 ft 6 in (9 910 mm)
D. Overall length – with out attachment	17 ft 3 in (5 270 mm)	17 ft 3 in (5 270 mm)	17 ft 3 in (5 270 mm)
E. Width of upperstructure	9 ft 1 in (2 770 mm)	9 ft 1 in (2 770 mm)	9 ft 1 in (2 770 mm)
Width of upperstructure with catwalks	NA	NA	NA
F. Track overall length	15 ft 3 in (4 650 mm)	15 ft 3 in (4 650 mm)	15 ft 3 in (4 650 mm)
G. Track overall width with 23.6 in (600 mm) shoes	11 ft 1 in (3 390 mm)	11 ft 1 in (3 390 mm)	11 ft 1 in (3 390 mm)
H. Track shoe width	2 ft 7 in (800 mm)	2 ft 7 in (800 mm)	2 ft 7 in (800 mm)
J. Center to center – idler to sprocket	12 ft 7 in (3 840 mm)	12 ft 7 in (3 840 mm)	12 ft 7 in (3 840 mm)
K. Upperstructure ground clearance	3 ft 7 in (1 100 mm)	3 ft 7 in (1 100 mm)	3 ft 7 in (1 100 mm)
L. Minimum ground clearance	1 ft 6 in (460 mm)	1 ft 6 in (460 mm)	1 ft 6 in (460 mm)
M. Rear tail swing radius	9 ft 8 in (2 950 mm)	9 ft 8 in (2 950 mm)	9 ft 8 in (2 950 mm)
Operating weight*	55,336 lb (25 100 kg)	55,088 lb (24 988 kg)	55,559 lb (25 201 kg)
Ground pressure	5.4 psi (0.37 bar)	5.4 psi (0.37 bar)	5.4 psi (0.37 bar)

NOTE: *With 19 ft 2 in (5.85 m) boom, 31.5 in (800 mm) track shoe, 2,544 lb (1 154 kg) bucket, 165 lb (75 kg) operator, full fuel and standard equipment.



PERFORMANCE SPECS

	9 ft 10 in (3.0 m) Arm	8 ft 2 in (2.5 m) Arm	11 ft 6 in (3.52 m) Arm
A. Maximum dig radius	33 ft 9 in (10 280 mm)	32 ft 3 in (9 820 mm)	35 ft 5 in (10 790 mm)
B. Dig radius at groundline	33 ft 2 in (10 100 mm)	31 ft 7 in (9 630 mm)	34 ft 10 in (10 620 mm)
C. Maximum dig depth	22 ft 8 in (6 900 mm)	21 ft 0 in (6 400 mm)	24 ft 4 in (7 420 mm)
D. Dig depth – 8 ft 0 in (2.44 m) level bottom	22 ft 1 in (6 740 mm)	20 ft 4 in (6 210 mm)	23 ft 10 in (7 270 mm)
E. Dump height	22 ft 2 in (6 760 mm)	21 ft 6 in (6 550 mm)	23 ft 2 in (7 060 mm)
F. Maximum reach height	32 ft 0 in (9 760 mm)	31 ft 4 in (9 560 mm)	33 ft 0 in (10 070 mm)
G. Bucket rotation	175°	175°	175°
H. Maximum vertical wall dig depth	20 ft 2 in (6 140 mm)	18 ft 8 in (5 700 mm)	21 ft 11 in (6 680 mm)
J. Minimum swing radius	13 ft 3 in (4 030 mm)	13 ft 1 in (3 980 mm)	13 ft 3 in (4 050 mm)
Arm digging force:			
Standard	26,977 lb (120 kN)	31,698 lb (141 kN)	24,055 lb (107 kN)
Power Boost	29,000 lb (129 kN)	33,946 lb (151 kN)	25,853 lb (115 kN)
Bucket digging force:			
Standard	36,419 lb (162 kN)	36,419 lb (162 kN)	36,419 lb (162 kN)
Power Boost	39,117 lb (174 kN)	39,117 lb (174 kN)	39,117 lb (174 kN)

STANDARD EQUIPMENT

ENGINE

Isuzu four-cylinder turbo-charged diesel
Tier 4 Interim Certified (CEGR)
Electronic fuel injection
High pressure common rail system
Diesel Particulate Defuser System (DPD)
Neutral safety start
Auto-engine warm up
Glow-plug pre-heat
EPF (Engine Protection Feature)
Dual-stage fuel filtration
Double element air filter
Remote oil filter
Green plug oil drain
500-hour engine oil change interval
24-Volt system

FUEL ECONOMY SYSTEMS

Engine Idle / Fuel Economy System
Auto-idle
One-touch idle
Idle shut-down
BEC—boom economy control
AEC—auto economy control
SWC—swing relief control
SSC—spool stroke control

HYDRAULICS

Auto power boost
Auto swing priority
Auto travel speed change
Selectable work modes
ISO pattern controls
Pre-set auxiliary pump settings

HYDRAULICS (continued)

Auxiliary valve
Auxiliary pipe brackets
5,000-hour hydraulic oil change interval
1,000-hour hydraulic filter change interval
SAHR brake

UPPERSTRUCTURE

Right and left side mirrors
Isolation mounted cab (fluid and spring)
Common key vandal locks
Upper mounted work light (70 watt)
Swivel guard belly pan

ATTACHMENTS

Boom—19 ft 2 in (5.85 m)
Arm—9 ft 10 in (3.00 m)
Heavy-duty bucket linkage
Boom mounted work light (70 watt)
Auxiliary pipe brackets
Centralized grease fittings
Attachment cushion valve
Arm and boom regeneration

OPERATOR STATION

ROPS protection
FOPS cab top guard (Level 1)
Pressurized cab
One-touch lock front window
AC/heat/defrost w/ auto climate control
Color monitor—7 in (180 mm)
Interior dome light
Air-suspension seat (cloth)
Adjustable armrests

OPERATOR STATION (continued)

Tilting consoles—4-position
Low-effort joystick controls
Sliding cockpit—7 in (180 mm)
Controls pre-wired for auxiliary
Single pedal travel
Straight travel
AM/FM radio w/ antenna and 2 speakers
Aux-in port for personal electronics
Rear-view camera
Anti-theft system (start code system)
Rubber floor mat
12-Volt electric outlet
24-Volt cigarette lighter
External rear view mirrors
Windshield wiper / washer
Clear (polycarbonate) roof window w/ sunshade
Cup holder
Storage compartments
Warm / cool storage compartment
On-board diagnostic system
Travel alarm with cancel switch
One key start & lock-up

UNDERCARRIAGE

31.5 in (800 mm) steel shoes, triple semi-grouser
Full overlap turntable bearing tub
Single track chain guides
Hydraulic track adjustment
X-pattern carbony

TELEMATICS

CASE SiteWatch™ Telematics – includes hardware and a 3-yr Advanced data subscription

OPTIONAL EQUIPMENT

HYDRAULICS

Auxiliary hydraulics
Double acting / joystick activated

ATTACHMENTS

Coupler / Case multi-pin grabber
Buckets: Heavy-duty / Extreme-duty
Load holding control
Free swing (order kit through Service Parts)
Hose Burst Check Valve (HBCV)

OPERATOR STATION

Control pattern selector
FOPS cab top guard (Level 2)
Front grill guard—2 x 2 in (50.8 x 50.8 mm) screen mesh
Front rock guard—vertical bars (two piece) / OPG 1
Front rock guard—vertical bars (fixed / one piece) / OPG 2
Vandal guard
Rain deflector
Sun visor
Side-view camera

UPPERSTRUCTURE

Refueling pump
Rubber bumper guard
(order through Service Parts)

UNDERCARRIAGE

Track guides—triple

BUCKETS

Application	Width	SAE Heaped Capacity
General purpose	30 in to 60 in (0.76 to 1.52 m)	1.26 yd ³ to 2.93 yd ³ (0.96 m ³ to 2.24 m ³)
Heavy-duty	30 in to 54 in (0.76 to 1.37 m)	1.22 yd ³ to 2.53 yd ³ (0.93 m ³ to 1.93 m ³)
Extreme-duty	30 in to 48 in (0.76 to 1.22 m)	1.12 yd ³ to 2.04 yd ³ (0.86 m ³ to 1.56 m ³)
Ditching	72 in (1.83 m)	2.20 yd ³ (1.68 m ³)

NOTE: All specifications are stated in accordance with SAE Standards or Recommended Practices, where applicable.

NOTE: All engines meet current EPA emissions requirements.

IMPORTANT: Case Construction Inc. reserves the right to change these specifications without notice and without incurring any obligation relating to such change. Case Construction Inc. does not warrant the safety or reliability of attachments from other manufacturers.

CASE is a trademark registered in the United States and many other countries, owned by or licensed to CNH Industrial N.V., its subsidiaries or affiliates. CNH Industrial Capital is a trademark in the United States and many other countries, owned by or licensed to CNH Industrial N.V., its subsidiaries or affiliates.



www.casece.com

Form No. CCE201503CX250CLC
Replaces Form No. CCE201111CX250CLC

Printed in U.S.A.
CX250C LC • Page 7 of 7

© 2015 CNH Industrial America LLC
All Rights Reserved

