



***Specialist Manufacturers of Quarry, Mining &  
Recycling Equipment***

Irish Manufacturing Services Limited  
34 Dunroe Road, Clogher, Co. Tyrone, N. Ireland  
BT76 0Dz  
Tel. +44 (0)28 8554 9656 E-mail [info@ims-ltd.ie](mailto:info@ims-ltd.ie)  
website; [www.ims-ltd.ie](http://www.ims-ltd.ie)



**IMS was formed in 2010 by a team of individuals with a wealth of experience in designing and manufacturing equipment for the mining, quarrying, recycling and materials handling industries.**

The company is based in Northern Ireland, in a region renowned worldwide for its expertise in producing high quality, cost effective equipment for the world market.

IMS operate from a purpose build factory to ensure efficient and quality manufacturing processes and to provide a reliable service to their ever increasing customer base.

IMS have developed design and manufacturing partnerships with a number of large international supply companies and also offer bespoke solutions where standard production line equipment does not fit the end customer requirements. This twin strategy approach of working with partners with specialist skills at the same time as providing custom built equipment when required ensures a win-win solution for the end customer.

---

#### **Contact Details**

Irish Manufacturing Services Limited

34 Dunroe Road

Clogher

Co.Tyrone

N.Ireland

BT76 0DZ

Telephone No. +44 28 85549656

E-mail: [info@ims-ltd.ie](mailto:info@ims-ltd.ie)

Website: [www.ims-ltd.ie](http://www.ims-ltd.ie)

This brochure is available on the downloads section of our website



## Contents

	Page
Mobile Screens	4-12
Pugmill	13-18
Blending Plant	19-23
Radial Conveyor	24-29
Conveyors	30-48
Silo	49-51
Mobile Separator	52-55



MS842W

Mobile Screen



**MS842W** Wheel mobile screening unit,  
the ideal solution for high production  
screening with the flexibility to move  
between sites safely and legally



### **8' x 4' (2.4 m x 1.2 m) 4-Bearing Screen**

The unique end to end crowning of the 8' x 4' (2.4 m x 1.2 m) MS842W screen box allows for higher production and more efficient separation than similarly sized flat screens.

### **On-Board Stockpiling Wing Conveyors**

The on-board stockpiling conveyors allow for fast set up times by eliminating the need for off plant stacking conveyors. The self cleaning wing conveyors have a folding mechanism that provides a compact profile for transport while providing a stockpile height of 14'3" (4,3 m).

### **Wing Conveyor Variable Speed Drive**

The top screen deck wing conveyor hydraulic system allows the user to adjust the speed of the conveyor to control rollback of material providing for a safer and more efficient operation.

### **On-Board Product Conveyor**

The folding mechanism of the on-board product conveyor allows for fast set up. It also provides a compact profile for transport, added strength, and a stockpile height of 3.8 m (12'6").

### **Maintenance Platform**

The maintenance platform on the MS842W extends across the rear portion of the screen and provides easy access to the screen panels for screen mesh replacement. Ladders with handrails are installed on both sides of the MS842W for access to the maintenance platform and to the remote screen bearing lubrication points.

### **Emergency Stop System**

Every MS842W is equipped from the factory with an emergency stop system that will render the plant inoperable when activated, providing added safety for the operator.

### **Remote Control Tipping Grid**

The optional remote control tipping grid function of the MS842W allows the operator to operate the screening plant from the seat of his loader or excavator increasing operator efficiency and plant production.





### **Standard Features**

Remote control heavy duty tipping grid  
Two-deck, four bearing 8' x 4' (2.4m x 1.2m) screen box  
Hydraulic folding wing conveyors  
Maintenance ladders and platform provides access to three sides of screen box  
On site towing bar  
Tier 3 Liquid Cooled Engine  
Hydraulic Jack legs  
Remote screen box greasing  
Acoustic engine canopy  
Emergency stop system  
Hydraulic oil cooler  
Light systems either 12v or 24v depending on destination

### **Options**

Shredder with manganese hammers for abrasive materials and Alternative  
Cutting blades for peat, topsoil or mulch applications  
USA Compatible Liquid Cooled Tier 4 Engine  
EC and UK Compatible Liquid Cooled Tier 5 Engine  
ABS brakes



### **Specifications**

Operational length	15.4M (50'6")
Operational height	4.4M (14'7")
Hopper capacity	6.9 cubic yds (5,3 cubic metres)
Loading height	3.3M (10'8")
Loading width	3.8M (12'6")
Hydraulic tank capacity	362 l (96 gal)
Diesel fuel capacity	151 l (40 gal)
Engine	Tier 3 Liquid Cooled
Engine power (horsepower)	74 kw (100 Hp)
Screen box size	2.4m x 1.2M (8' x 4')
Screen box type	4 bearing
Towing arrangement	Fifth wheel
Brakes	Tractor air braking system t
Transport width	2.5m (8'2")
Travel height	3.9m (13'0")
Transport length	13.1M (43'0")
King Pin weight	3680 kg (8096 lbs)
Total weight	13700 kg (30203 lbs)

*Due to Irish Manufacturing Services Limited's policy of continuing product improvements, Specifications are subject to change without notice or obligation. No representation is made that the products depicted herein comply with any laws, codes, rules, regulations or standards. Compliance is the responsibility of the user. Additional safety equipment may be required by the particular location and application of product.*

**Irish Manufacturing Services Limited**

**34 Dunroe Road, Clogher, Co. Tyrone, N. Ireland BT76 0Dz Tel. +44 (0)28 8554 9656**

**E-mail [info@ims-ltd.ie](mailto:info@ims-ltd.ie)**

**Website: [www.ims-ltd.ie](http://www.ims-ltd.ie)**



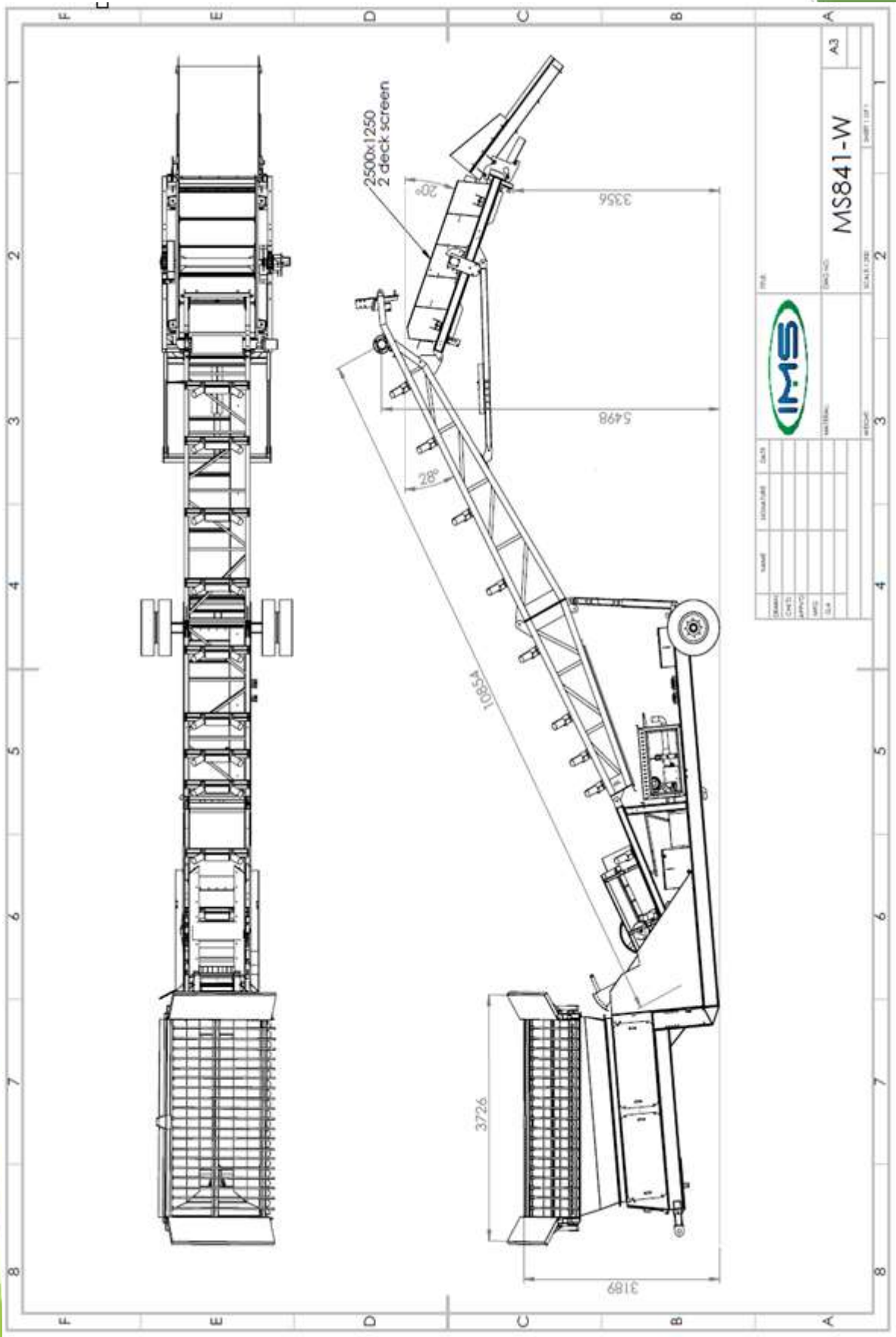
MS841W

## Mobile Screen



A leading manufacturer of screening and conveyor equipment, offers the MS841W wheel mobile screen, the ideal screening solution for small sand and gravel pits, topsoil screening, small quantity aggregate sizing. Compost materials and wood by-products.







### **Features and Benefits**

7 Yd (5.3M) Hopper with Variable Speed Belt Feeder and Remote Tipping Grid  
Maximum Feed Size 6"  
8' x 4' Double Deck 4 Bearing screen with end tensioned meshes  
Capacity up to 250 tph (depending on material type, feed size and screen media selection)  
Diesel Hydraulic Drive to latest emission standards  
Alternative Electric Hydraulic Drive  
Fifth Wheel Towing with transport wheels and axle  
Site Towbar for localized movement with site equipment

### **Specification**

Total Weight:	20000lbs (9100kgs)
Transport Length:	53'0" (16.15m)
Transport Width:	7'3" (2.2m)
Transport Height:	12'6" (3.8m)
Working Length:	57'0" (17.4m)
Working Width:	7'3" (2.2m)
Working Height	16' 6" (5.03m)
Screen Size:	8' x 4' (2500mm x 1250mm)
Diesel Power:	50HP (37KW) Tier 4F (USA) /Tier 5 (Europe)
Electric Power:	50HP (37KW)



### **Hopper and Grid**

Capacity 7 cu yd. (5.3cu M)  
Remote Control Tipping Grid  
Grid Spacing 4" (100mm), 5" (125mm), 6" (150mm)  
Single Bar Grid for easy replacement  
Feed In Height 10'6" (3.2m)  
Target Area 12'3" x 6'0" ( 3.7m x 1.8m)

### **Belt Feeder**

30" (750mm) 2 ply plain belt  
Danfoss Direct Drive Hydraulic Motor  
Variable Speed Control

### **Main Conveyor**

30" (750mm) 2 ply plain belt  
Danfoss Direct Drive Hydraulic Motor  
Manual

### **Screenbox**

8' x 4' (2500mm x 1250mm) Incline Double Deck 4 bearing screen  
End Tensioned Meshes  
Manual Screen Tensioning  
Manual Screen Angle Adjustment

### **Power Unit**

50HP (37KW) Diesel Engine (Tier 4F (USA) / Tier 5 (EC)  
Fuel Tank 35 gallon (160 litres)  
Hydraulic Tank 50 gallon (220 litres)  
Tandem 2PL 070 Hydraulic Pump

### **Axle and Wheels**

Single Axle non-braked with Twin 7.50 x 8 stud Wheels



### **Options**

Single Shaft Shredder with hammers or flails

Braked Axle

Light Board

Rinse Bars and Rubber Lined Sandbox

3 Deck Screen

*Due to Irish Manufacturing Services Limited's policy of continuing product improvements, Specifications are subject to change without notice or obligation. No representation is made that the products depicted herein comply with any laws, codes, rules, regulations or standards. Compliance is the responsibility of the user. Additional safety equipment may be required by the particular location and application of product.*

**Irish Manufacturing Services Limited**

**34a Dunroe Road, Clogher, Co. Tyrone, N. Ireland BT76 0Dz**

**Tel. +44 (0)28 8554 9656 E-mail [info@ims-ltd.ie](mailto:info@ims-ltd.ie) website; [www.ims-ltd.ie](http://www.ims-ltd.ie)**



PM 1050-16TB

Track Pugmill







The PM1050-16TB, the ideal solution for jobs that require high production material blending and mixing with the added bonus of a stockpiling facility







### **Conveyor**

The conveyor is constructed in 3 latticed angle sections , the tail section includes a generous 8m<sup>3</sup> feed hopper and the head section includes the conveyor drive, consisting of twin Sauer-Danfoss hydraulic motors coupled to a rubber lagged drive pulley

### **Diesel-Hydraulic Power Unit**

The conveyor is powered by a 75kw liquid cooled Diesel Engine coupled to a triple hydraulic pump giving sufficient oil flow to drive the conveyor at maximum output, to provide the drive for the Pug Head, to operate the crawler tracks, and to operate the various hydraulic cylinders

### **Undercarriage**

The undercarriage consists of the hydraulically operated crawler tracks together with an adjustable support trestle arrangement, which allows variation in both feed and discharge heights

### **Pug Mill**

The Pug Mill is designed with Twin Mixer shafts for anti-surfing and high production material blending. Each shaft is fitted with replaceable 500 grade Paddle tips rotatable through 180° to equalize wear. Pug Mill drive to consist of a hydraulic piston motor directly coupled to a Chain Final Drive to give fixed output speed of 470rpm.

### **Hydraulic Folding Mechanism**

The folding mechanism of the conveyor head and tail sections allow for quick site set up and provides a flexible approach to transport of the unit. The hydraulic folding is designed so that the hydraulic cylinder piston rods are fully protected when the machine is operational

### **Emergency Stop System**

Every PM1050-16TB Track Pug Mill unit is equipped from the factory with an emergency stop system that will render the plant inoperable when activated, providing added safety for the operator.



### **Standard Features**

Crawler Track Movement with Dog Lead Control

75 kw Diesel-Hydraulic Drive

1050mm (42") wide 3 ply belt

Hydraulic Folding on Pug Mill

Hydraulic Folding of Head Section

Hydraulic Raise and Lower

Hydraulic Adjustment of Tail Section for transport on Low Loader

Water Header Tank

Additive Chute

Wash facility for Pug Mill Mixer

### **Options**

Detachable Cement Weigh Hopper

PLC System

Dual Power: Electric & Diesel / Hydraulic Power Unit

Hopper Hardox Wearplates

Remote Start/Stop

Tier 4 Engine USA

Tier 5 Engine- EC and UK





## Specifications

Operational Length	18M" (60')
Operational Height	5M" (16'4")
Loading Height	2.87M (9' 6")
Hydraulic Tank Capacity	377 l (83 gallon)
Diesel Fuel Capacity	216 l (48 gallon)
Engine	Tier 3 four Cylinder Liquid Cooled
Transport Width	2.25M (7' 4")
Transport Height	3.5M (11' 6") Low Loader 2.546M (8' 4") Container
Transport Length	13.5M (44' 3") Low Loader 12.0M (39' 4") Container
Total Weight	19680 kgs (43296 lbs)

*Due to Irish Manufacturing Services Limited's policy of continuing product improvements, Specifications are subject to change without notice or obligation. No representation is made that the products depicted herein comply with any laws, codes, rules, regulations or standards. Compliance is the responsibility of the user. Additional safety equipment may be required by the particular location and application of product.*

**Irish Manufacturing Services Limited**

**34 Dunroe Road, Clogher, Co. Tyrone, N. Ireland BT76 0Dz**

**Tel. +44 (0)28 8554 9656 E-mail [info@ims-ltd.ie](mailto:info@ims-ltd.ie) website; [www.ims-ltd.ie](http://www.ims-ltd.ie)**



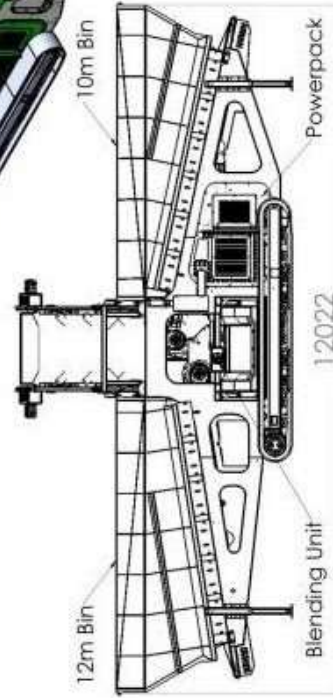
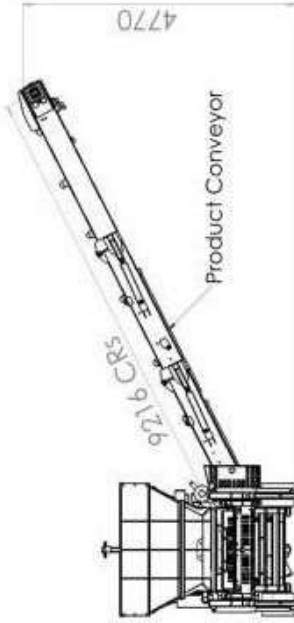
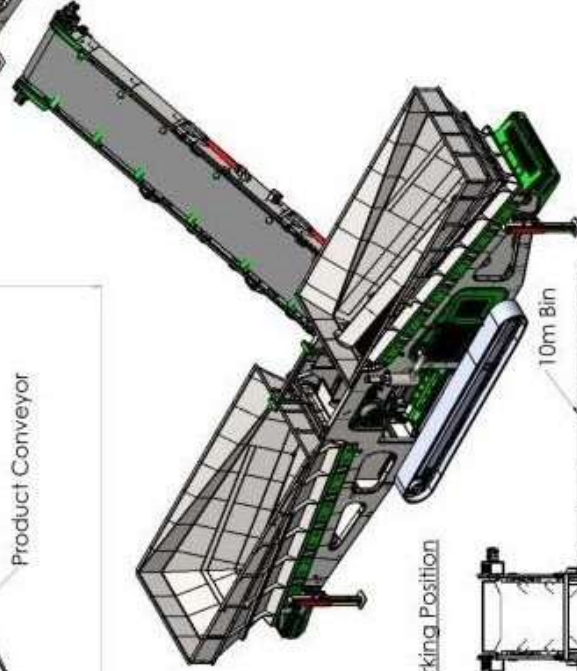
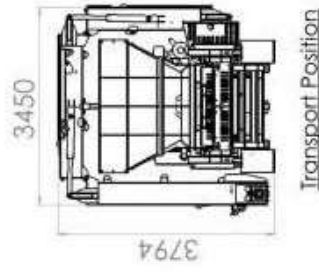
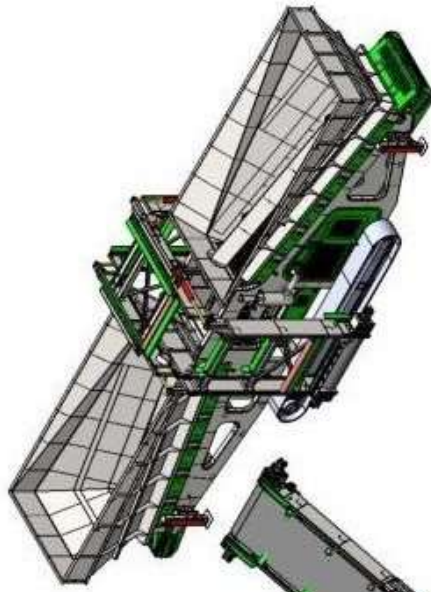


# BP1200-9TB

## Mobile Blending Plant



The BP1200-9TB Mobile Blender has been developed by IMS to meet the many applications where blending of material is essential. It can be used in applications where high volumes are required and is capable of producing up to 1000tph of blended material. Where more refined mixing is required, the unit is equipped with a mixing chamber with rotating mixer shaft to thoroughly blend mulch, topsoil, sand, etc. for use in lawn development, golf courses, and similar applications





### **Feed Hoppers**

12cbm and 10cbm capacity feed hoppers located adjacent to each other to accept material from loading shovels. Hoppers fitted with 1000mm wide belt feeders placed strategically to allow discharge from 10cbm hopper to feed directly on top of discharge from 12cbm hopper. Both Feeder Belts equipped with variable speed control to allow operator to define material ratio from each bin.

### **Undercarriage**

The undercarriage consists of a robust modular type chassis fitted with 4500mm long crawler tracks. 4 No. Hydraulically operated support legs are provided to the 4 corners of the chassis to ensure stability when operational

### **Discharge Conveyor**

1200mm wide x 9.2m long Discharge Conveyor capable of handling up to 1000tph of blended material. Conveyor fitted with heavy duty chevron belt and driven with 2 OMV630 hydraulic motors

### **Power Unit**

Unit powered by a Tier 3 Flex Diesel Engine with multiple hydraulic pumps to provide oil flow for the various functions. Power unit is adequately enclosed in suitable canopy with oil cooler and airflow to control the temperature inside the enclosure. Diesel and hydraulic tanks located adjacent to the Power Unit

### **Mixer/Shredder Unit**

A hydraulic operated single shaft Mixer/Shredder unit is located centrally to accept the discharge from both feeders. This Mixer/Shredder is used when more refined mixing is required but can be moved out of line by hydraulic cylinder when large volume output is required

### **Controls**

All the controls are centrally located and are easy accessible for the operator. The controls include the Engine Starter Panel, the solenoid engagement switches, the manual controls for the hydraulic cylinders, and flow control operation.

### **Emergency Stop System**

Every BP1200-9TB track Conveyor is equipped from the factory with an emergency stop system that will render the plant inoperable when activated, providing added safety for the operator



### **Standard Features**

12m<sup>3</sup> and 10m<sup>3</sup> Feed Hoppers  
Variable Speed Belt Feeders  
Crawler Track Movement  
75kw Diesel Hydraulic Power Unit Tier 3 Engine  
1200mm (48") wide Discharge Conveyor  
Hydraulic Folding of Conveyor for Transport  
Hydraulic Support Legs for Operational Stability  
Pull Cord Emergency Stops

### **Options**

Hydraulic Tipping Grid  
Dust Covers over Discharge Conveyor  
Belt Scales on Feeders  
Hardox Wareplates in Hoppers  
Tier 4 Engine USA  
Tier 5 Engine EC and UK





## Specifications

Operational length	12.02M (40')
Operational height	4.77M (15' 8")
Loading height	3.1M (10' 2")
Hydraulic tank capacity	650 l (143 gallon)
Diesel fuel capacity	450l (100 gallon)
Engine	Tier 3 four cylinder liquid cooled
Transport width	3.45M (11' 4")
Transport height	3.8 M (12' 5")
Transport length	12.02M (40')
Total weight	19400 kgs (42770 lbs)

*Due to Irish Manufacturing Services Limited's policy of continuing product improvements, Specifications are subject to change without notice or obligation. No representation is made that the products depicted herein comply with any laws, codes, rules, regulations or standards. Compliance is the responsibility of the user. Additional safety equipment may be required by the particular location and application of product.*

**Irish Manufacturing Services Limited**

**34 Dunroe Road, Clogher, Co. Tyrone, N. Ireland BT76 0Dz**

**Tel. +44 (0)28 8554 9656 E-mail [info@ims-ltd.ie](mailto:info@ims-ltd.ie) website; [www.ims-ltd.ie](http://www.ims-ltd.ie)**



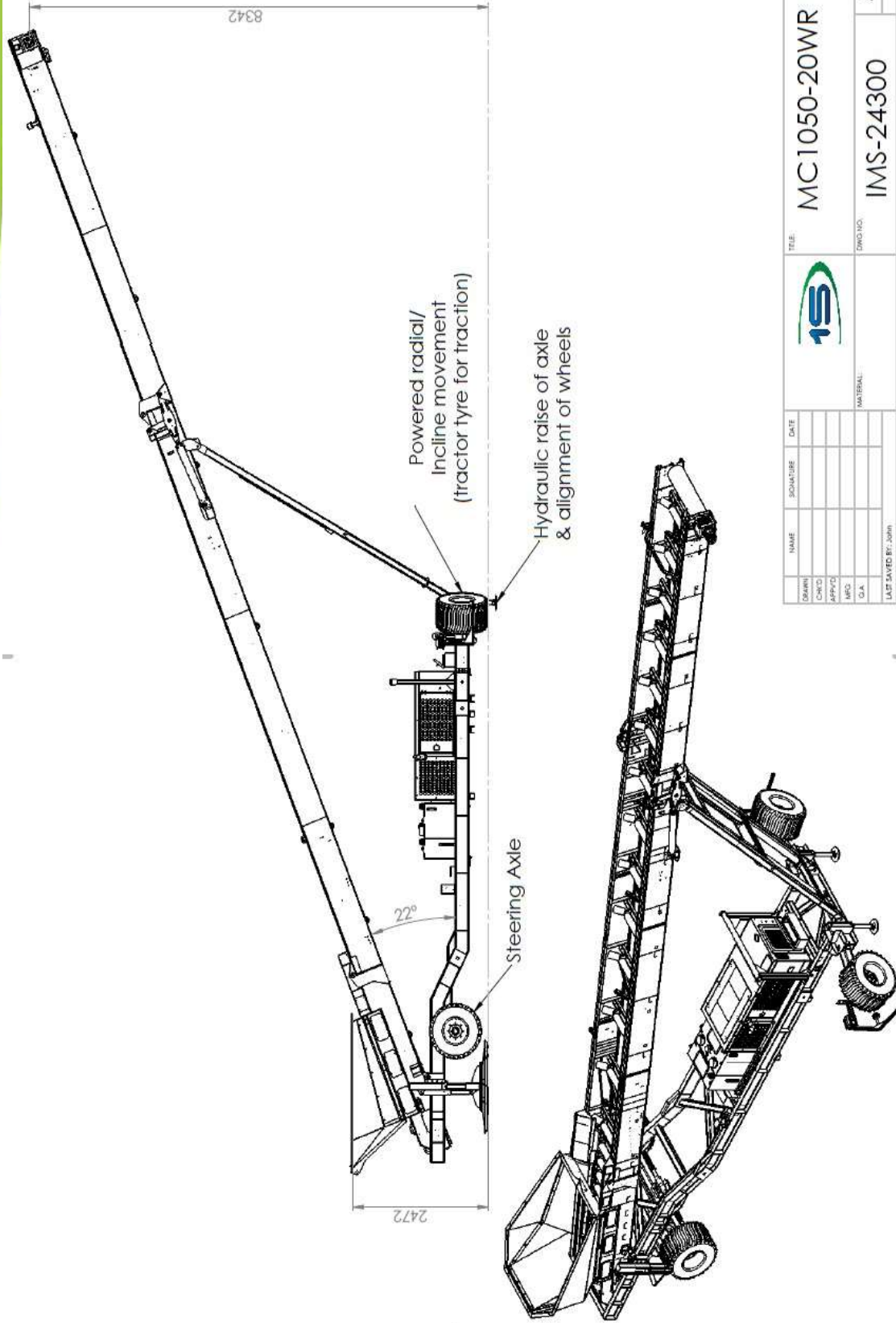


MC1050-20WR

## Wheel Radial Conveyor



A leading manufacturer of screening and conveyor equipment, offer the MC1050-20WR wheel stacking conveyor, the ideal conveyor for handling wood chip, mulch, and recycled waste timber



TITLE		MC1050-20WR		DWG NO.		IMS-24300		SHEET 1 OF 1	
DRAWN		NAME		SIGNATURE		DATE		SCALE 1:100	
CHKD									
APP'D									
MFG									
C.A.									
LAST SAVED BY: JMM									
LAST SAVED DATE: 01/10/2018									
WEIGHT: 86300 kg									







### **Heavy Duty Construction**

Constructed from 5mm thick MS plate designed in 500mm deep section to give added stability and to withstand the rigours of heavy duty operation

### **Conveyor**

The conveyor is constructed in 3 sections , the tail section includes a generous feed hopper and the head section includes the conveyor drive , consisting of a Sauer-Danfoss hydraulic motor and rubber lagged drive pulley

### **Diesel-Hydraulic Power Unit**

The conveyor is powered by a 38 kw DieselEngine coupled to a tandem hydraulic pump giving sufficient oil flow to drive both the conveyor at maximum output and to operate the magnet

### **Radial Operation**

The Radial Operation is facilitated by 2 445/55 x 22.5 Super Single wheels mounted in radial alignment. One of the wheels is driven by a Brevini geared hydraulic motor to provide radial movement. The radial wheels are retracted via hydraulic cylinders to transform the machine to road transport mode

### **Road Transport**

The undercarriage consists of a heavy duty chassis with a TUV approved axle with 385/55 x 22.5 Super Single Wheels, VBG approved Tow Hitch, Braking System and approved 24v Lighting System.

### **Hydraulic Folding Mechanism**

The folding mechanism of the conveyor head section allows for quick site set up and provides a flexible approach to transport of the unit. The hydraulic folding is designed so that the hydraulic cylinder piston rods are fully protected when the machine is operational

### **Magnet**

An Eriez CP20/100 SC2 hydraulically driven Overband Magnet is provided to remove nails etc from timber products. Magnet installation includes stainless steel chute to discharge collected material to waste skip

### **Emergency Stop System**

Every MC1050-20WR Conveyor is equipped from the factory with an emergency stop system that will render the plant inoperable when activated, providing added safety for the operator



### **Standard Features**

38 kw Diesel-Hydraulic Drive  
1050mm (42") wide 3 ply belt  
Hydraulic Folding on Head Section  
Hydraulic Raise and Lower  
Manual Folding of Tail Section

### **Options**

Heavy Duty Belt  
Chevron Belt  
Conveyor Belt Variable Speed Control  
Electric Hydraulic Power Unit  
PVC covers  
Galvanised Steel Covers  
Feedboot Mild Steel Wear Plates  
Feedboot  
Hardox Wearplates  
Feedboot Extensions  
Twin Electric Drive  
Impact Rollers  
Tier 4 Engine USA  
Tier 5 Engine EC and UK





## Specifications

Operational length	20M (65')
Operational height	9.16M (30') At maximum height (26°) chevron belt may be required
Loading height	1.2M (4'0")
Hydraulic tank capacity	320 l (70 gallon)
Diesel fuel capacity	155 l (35 gallon)
Engine	Tier 3 Liquid Cooled
Engine power (horsepower)	38kw (51 HP)
Transport width	2.5 M (8'0")
Transport height	4.0 M (13' 2")
Transport length	14.9M (49'0")
Total weight	12640kgs (27800 lbs)
Axle Weight	9440kgs (20770 lbs)

*Due to Irish Manufacturing Services Limited's policy of continuing product improvements, Specifications are subject to change without notice or obligation. No representation is made that the products depicted herein comply with any laws, codes, rules, regulations or standards. Compliance is the responsibility of the user. Additional safety equipment may be required by the particular location and application of product.*

**Irish Manufacturing Services Limited**

**34 Dunroe Road, Clogher, Co. Tyrone, N. Ireland BT76 0Dz**

**Tel. +44 (0)28 8554 9656 E-mail [info@ims-ltd.ie](mailto:info@ims-ltd.ie) website; [www.ims-ltd.ie](http://www.ims-ltd.ie)**



MC 1050-20T

TRACK CONVEYOR



A leading manufacturer of screening and conveyor equipment, offer the MC1050-20T tracked stacking conveyor, ensuring regular & consistent feed the MC1050-20T is the ideal solution for jobs that require high production stockpiling or material transfer





### **Heavy Duty Construction**

Constructed from 5mm thick MS plate designed in 500mm (20") deep section to give added stability and to withstand the rigours of heavy duty operation

### **Conveyor**

The conveyor is constructed in 3 sections , the tail section includes a generous feed hopper and the head section includes the conveyor drive , consisting of a Sauer-Danfoss hydraulic motor and rubber lagged drive pulley

### **Diesel-Hydraulic Power Unit**

The conveyor is powered by a Tier 4 38 kw Diesel Engine coupled to a tandem hydraulic pump giving sufficient oil flow to drive both the conveyor at maximum output and to operate the crawler tracks

### **Undercarriage**

The undercarriage consists of the hydraulically operated crawler tracks together with an adjustable support trestle arrangement, which allows variation in both feed and discharge heights

### **Hydraulic Folding Mechanism**

The folding mechanism of the conveyor head section allows for quick site set up and provides a flexible approach to transport of the unit. The hydraulic folding is designed so that the hydraulic cylinder piston rods are fully protected when the machine is operational

### **Emergency Stop System**

Every MC1050-20T track Conveyor is equipped from the factory with an emergency stop system that will render the plant inoperable when activated, providing added safety for the operator.





### **Standard Features**

Crawler Track Movement  
38kw Diesel-Hydraulic Drive  
1050mm (42") wide 3 ply belt  
Hydraulic Folding on Head Section  
Hydraulic Raise and Lower  
Manual Folding of Tail Section

### **Options**

Hydraulic Folding of Tail Section  
Heavy Duty Belt  
Chevron Belt  
Dual Hydraulic Drive for increased throughput  
Feed Impact Bars  
Conveyor Belt Variable Speed Control  
Dual Power: Electric & Diesel / Hydraulic Power Unit  
PVC covers  
Galvanised Steel Covers  
Pull Cord Emergency Stops  
Feedboot Mild Steel Wear Plates  
Feedboot Hardox Wearplates  
Feedboot Extensions  
Radio Remote Control  
Tier 4 Engine USA  
Tier 5 Engine EC and UK



### Specifications

Operational Length	20M (65')
Operational Height	8.06M (26' 6")
Loading Height	1.2M-3.4M (4'0"-11'3")
Hydraulic Tank Capacity	320 l (70 gallon)
Diesel Fuel Capacity	155 l (35 gallon)
Engine	Tier 3 Liquid Cooled
Engine Power	38 kw (51 HP)
Transport Width	2.25M (7' 4")
Transport Height	2.5M (8' 2")
Transport Length	10.7M (35' 10")
Total Weight	9560 kgs (21030 lbs)

*Due to Irish Manufacturing Services Limited's policy of continuing product improvements, Specifications are subject to change without notice or obligation. No representation is made that the products depicted herein comply with any laws, codes, rules, regulations or standards. Compliance is the responsibility of the user. Additional safety equipment may be required by the particular location and application of product.*

**Irish Manufacturing Services Limited**

**34 Dunroe Road, Clogher, Co. Tyrone, N. Ireland BT76 0Dz**

**Tel. +44 (0)28 8554 9656 E-mail [info@ims-ltd.ie](mailto:info@ims-ltd.ie) website; [www.ims-ltd.ie](http://www.ims-ltd.ie)**



MC 1050-20TF

## FEED TRACK CONVEYOR



A leading manufacturer of screening and conveyor equipment, offer the MC1050-20TF Feed tracked stacking conveyor, ensuring regular & consistent feed the MC1050-20TF is the ideal solution for jobs that require high production stockpiling or material transfer



### **Heavy Duty Construction**

Constructed from 5mm thick MS plate designed in 500mm deep section to give added stability and to withstand the rigours of heavy duty operation.

### **Feed Hopper**

8 cubic metre capacity feed hopper with 4.5m wide target area to accept most loaders. Hopper lined with 6mm MS wear plates.

1050mm wide belt feeder with impact rollers, heavy duty belt and variable speed control.

### **Discharge Conveyor**

The conveyor is constructed in 3 sections, the tail section includes a standard reception hopper and the head section includes the conveyor drive, consisting of 2 Sauer-Danfoss hydraulic motors and rubber lagged drive pulley. The belt width is 1050mm and the overall length of the discharge conveyor is 20m.

### **Diesel-Hydraulic Power**

The conveyor is powered by a 74 kw Diesel Engine coupled to a triple hydraulic pump giving sufficient oil flow to drive the variable speed belt feeder, the main discharge conveyor and the crawler tracks.

### **Undercarriage**

The undercarriage consists of the hydraulically operated crawler tracks together with an adjustable support trestle arrangement, which allows variation in both feed and discharge heights.

### **Hydraulic Folding Mechanism**

The folding mechanism of the conveyor head section allows for quick site set up and provides a flexible approach to transport of the unit. The hydraulic folding is designed so that the hydraulic cylinder piston rods are fully protected when the machine is operational.

### **Emergency Stop System**

Every MC1050-20TF track Conveyor is equipped from the factory with an emergency stop system that will render the plant inoperable when activated, providing added safety for the operator.





## **Standard Features**

Detachable Hopper to allow for container transport –  
Hopper in 20' Container, Conveyor in 40' Container

Extended foldable head section to give additional reach from tracks  
13m from front of tracks to discharge point

Radio Remote Control Tracking

1050mm (42") wide Feeder and Main Belt

127mm (5") Impact Rollers under Feeder

Mild Steel Replaceable Liner Plates in Hopper as standard

Helmet Door on front of Hopper to regulate flow of material

8 cubic metre capacity Hopper

Cartridge type Feeder – Can be removed easily for maintenance

User friendly hydraulic inclination (no pins required)

Crawler Track Movement

74 kw Diesel-Hydraulic Drive

1050mm (42") wide 3 ply belt in both Feeder and Discharge Conveyor

Hydraulic Folding on Head Section

Hydraulic Raise and Lower



## Options

Remote Control Hydraulic Tipping Grid  
Single Deck Vibrating Grid  
Tier 4 Engine USA  
Tier 5 Engine EC and UK  
Hardox 400 Wear Liners In Hopper  
Rear Low Loading Hopper  
Shredder on discharge from Feeder  
Heavy Duty Belt On Discharge Conveyor  
Chevron Belt On Discharge Conveyor  
Dual Power: Electric & Diesel / Hydraulic Power Unit  
PVC Covers

## Specifications

Operational Length	23.5M (77')
Operational Height	9.03M (30")
Loading Height	3.1M (10")
Hydraulic Tank Capacity	600 l (132 Gallon)
Diesel Fuel Capacity	275 l (61 Gallon)
Engine	Tier 3 Liquid Cooled
Engine Power	74kw (100HP)
Transport Width	2.314M (7' 8")
Transport Height	3.10M (10')
Transport Length	15.5M (51')
Total Weight	17000 kgs (37400 lbs)

*Due to Irish Manufacturing Services Limited's policy of continuing product improvements, Specifications are subject to change without notice or obligation. No representation is made that the products depicted herein comply with any laws, codes, rules, regulations or standards. Compliance is the responsibility of the user. Additional safety equipment may be required by the particular location and application of product.*

**Irish Manufacturing Services Limited**

**34 Dunroe Road, Clogher, Co. Tyrone, N. Ireland BT76 0Dz**

**Tel. +44 (0)28 8554 9656 E-mail [info@ims-ltd.ie](mailto:info@ims-ltd.ie) website; [www.ims-ltd.ie](http://www.ims-ltd.ie)**



**MC 1050-24T**

## **FEED TRACK CONVEYOR**



**A leading manufacturer of screening and conveyor equipment, offers the MC1050-24T tracked stacking conveyor, the ideal solution for jobs that require high production stockpiling or material transfer**

Irish Manufacturing Services Limited  
34 Dunroe Road, Clogher, Co. Tyrone, N. Ireland  
BT76 0Dz  
Tel. +44 (0)28 8554 9656 E-mail [info@ims-ltd.ie](mailto:info@ims-ltd.ie)  
website; [www.ims-ltd.ie](http://www.ims-ltd.ie)



### **Heavy Duty Construction**

Constructed from 5mm thick MS plate designed in 500mm deep section to give added stability and to withstand the rigours of heavy duty operation.

### **Conveyor**

The conveyor is constructed in 3 sections , the tail section includes a generous feed hopper and the head section includes the conveyor drive, consisting of a Sauer-Danfoss hydraulic motor and rubber lagged drive pulley.

### **Diesel-Hydraulic Power Unit**

The conveyor is powered by a 44 kw Diesel Engine coupled to a tandem hydraulic pump giving sufficient oil flow to drive both the conveyor at maximum output and to operate the crawler tracks.

### **Undercarriage**

The undercarriage consists of the hydraulically operated crawler tracks together with an adjustable support trestle arrangement, which allows variation in both feed and discharge heights.

### **Hydraulic Folding Mechanism**

The folding mechanism of the conveyor head section and tail sections allows for quick site set up and provides a flexible approach to transport of the unit. The hydraulic folding is designed so that the hydraulic cylinder piston rods are fully protected when the machine is operational.

### **Emergency Stop System**

Every MC1050-24T track Conveyor is equipped from the factory with an emergency stop system that will render the plant inoperable when activated, providing added safety for the operator.





### **Standard Features**

Crawler Track Movement  
40 kw Diesel-Hydraulic Drive  
1050mm (42") wide 3 ply belt  
Hydraulic Folding on Head Section  
Hydraulic Folding of Tail Section  
Hydraulic Raise and Lower  
Single Hydraulic Motor Drive (Sauer-Danfoss)

### **Options**

Heavy Duty Belt  
Conveyor Belt Variable Speed Control  
Dual Hydraulic Drive For Increased Throughput  
Feed Impact Bars  
Galvanised Steel Covers  
Dual Power: Electric & Diesel/Hydraulic Power Unit  
PVC Covers  
Feedboot Hardox Wareplates  
Pull Cord Emergency Stops  
Feedboot Mild Steel Wear Plates  
15 Tonne Capacity Hopper  
Feedboot Extensions  
Radio Remote Control  
Twin Hydraulic Drive  
Remote Variable Speed Belt Speed Control  
Tier 4 Engine USA  
Tier 5 Engine EC and UK



### **Specifications**

Operational Length	24M (79')
Operational Height	9.02M (29'7")
Loading Height	1.48M-2.46M (4'9"-8'3")
Hydraulic Tank Capacity	377 l (83 Gallon)
Diesel Fuel Capacity	216 l (48 Gallon)
Engine	Tier 3 Liquid Cooled
Engine Power	44kw (59HP)
Transport Width	2.25M (7' 4")
Transport Height	2.5M (8' 2")
Transport Length	12.2M (40' 3")
Total Weight	11470 kgs (25234 lbs)

*Due to Irish Manufacturing Services Limited's policy of continuing product improvements, Specifications are subject to change without notice or obligation. No representation is made that the products depicted herein comply with any laws, codes, rules, regulations or standards. Compliance is the responsibility of the user. Additional safety equipment may be required by the particular location and application of product.*

**Irish Manufacturing Services Limited**

**34 Dunroe Road, Clogher, Co. Tyrone, N. Ireland BT76 0Dz**

**Tel. +44 (0)28 8554 9656 E-mail [info@ims-ltd.ie](mailto:info@ims-ltd.ie) website; [www.ims-ltd.ie](http://www.ims-ltd.ie)**

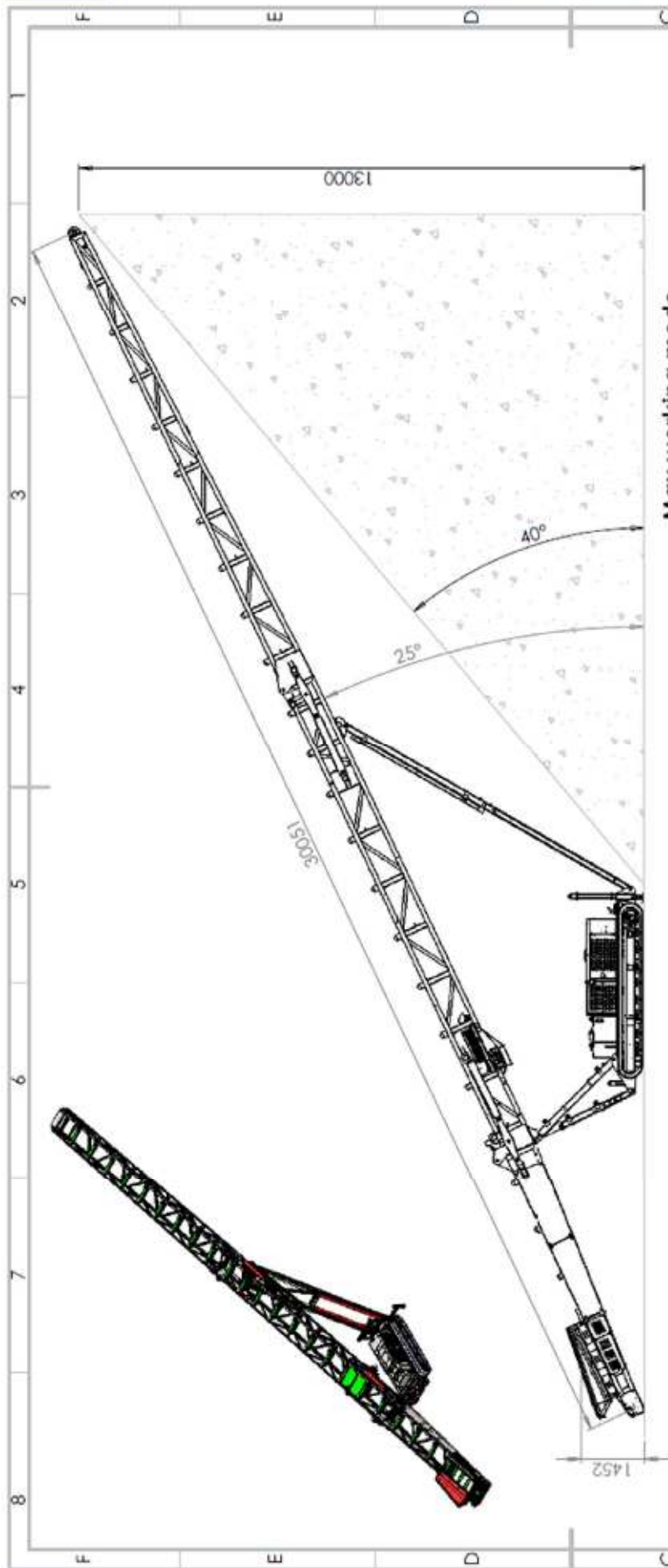


MC 1050-30T

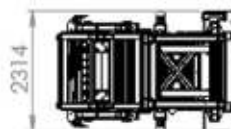
## TRACK CONVEYOR



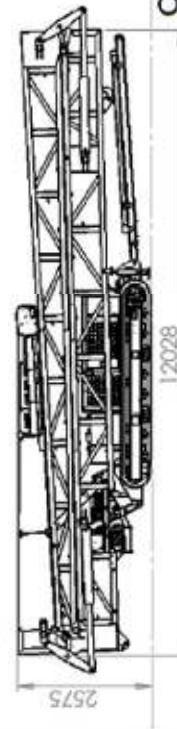
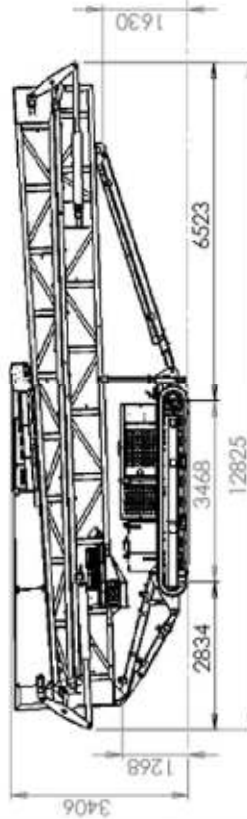
A leading manufacturer of screening and conveyor equipment, offer the MC1050-30T tracked stacking conveyor, ensuring regular & consistent feed the MC1050-30T is the ideal solution for jobs that require high production stockpiling or material transfer



**Max working mode**



**Transport mode**



**Container mode**

DO NOT SCALE DRAWING		REVISION	
CRANE AND SERIAL NUMBER		TYPE	
MC1050-30T (CAT3.4)		IMS-24486	
SCALE		SHEET 1 OF 1	
NAME		DATE	
SIGNATURE		DATE	
MODIFIED CHANGES (RECORD)		MODIFIED CHANGES (RECORD)	
DATE		DATE	
BY		BY	
CHECKED		CHECKED	
APPROVED		APPROVED	
DATE		DATE	
BY		BY	
CHECKED		CHECKED	
APPROVED		APPROVED	
DATE		DATE	
BY		BY	





### **Heavy Duty Construction**

Heavy Duty lattice angle construction to give added stability and to withstand the rigours of heavy duty operation.

### **Conveyor**

The conveyor is constructed in 3 sections, the tail section includes a generous feed hopper and the head section includes the conveyor drive, consisting of twin Sauer-Danfoss hydraulic motors coupled to a rubber lagged drive pulley.

### **Diesel-Hydraulic Power Unit**

The conveyor is powered by a Tier 3 74kw water cooled Diesel Engine coupled to a tandem hydraulic pump giving sufficient oil flow to drive both the conveyor at maximum output and to operate the crawler tracks.

### **Undercarriage**

The undercarriage consists of the hydraulically operated crawler tracks together with an adjustable support trestle arrangement, which allows variation in both feed and discharge heights.

### **Hydraulic Folding Mechanism**

The folding mechanism of the conveyor head and tail sections allow for quick site set up and provides a flexible approach to transport of the unit. The hydraulic folding is designed so that the hydraulic cylinder piston rods are fully protected when the machine is operational.

### **Emergency Stop System**

Every MC1050-30T track Conveyor is equipped from the factory with an emergency stop system that will render the plant inoperable when activated, providing added safety for the operator.



### **Standard Features**

Crawler Track Movement  
74 kw Diesel-Hydraulic Drive  
1050mm (42") wide 3 ply belt  
Hydraulic Folding on Head Section  
Hydraulic Folding of Tail Section  
Hydraulic Raise and Lower

### **Options**

Heavy Duty Belt  
Chevron Belt  
Feed Impact Bars  
Conveyor Belt Variable Speed Control  
Dual Power: Electric & Diesel / Hydraulic Power Unit  
PVC covers  
Galvanised Steel Covers  
Pull Cord Emergency Stops  
Feedboot Mild Steel Wear Plates  
Feedboot Hardox Wearplates  
Feedboot Extensions  
Radio Remote Control  
Tier 4 Engine USA  
Tier 5 Engine EC and UK



### **Specifications**

Operational Length	30M (100')
Operational Height	13M (42'8")
Loading Height	1.2M-3.4M (4'0"-11'3")
Hydraulic Tank Capacity	377 l (83 Gallon)
Diesel Fuel Capacity	216 l (48 Gallon)
Engine	Tier 3 Liquid Cooled
Engine Power	74kw (100HP)
Transport Width	2.25M (7' 4")
Transport Height	2.5M (8' 2")
Transport Length	12.2M (40' 3")
Total Weight	13200 kgs (29040 lbs)

*Due to Irish Manufacturing Services Limited's policy of continuing product improvements, Specifications are subject to change without notice or obligation. No representation is made that the products depicted herein comply with any laws, codes, rules, regulations or standards. Compliance is the responsibility of the user. Additional safety equipment may be required by the particular location and application of product.*

**Irish Manufacturing Services Limited**

**34 Dunroe Road, Clogher, Co. Tyrone, N. Ireland BT76 0Dz**

**Tel. +44 (0)28 8554 9656 E-mail [info@ims-ltd.ie](mailto:info@ims-ltd.ie) website;  
[www.ims-ltd.ie](http://www.ims-ltd.ie)**



## Wheel Conveyors



MC1050-20W 20m Wheel Conveyor x  
1050mm Wide Belt

- Hydraulic Unit with OMV 630 Hydraulic Motor
- Electric Unit with 2 x 7.5kw Motor
- Options Available



MC1050-24W 24m Wheel Conveyor x  
1050mm Wide Belt

- Hydraulic Unit with OMV 630 Hydraulic Motor
- Electric Unit with 2 x 9.2kw Motor
- Options Available

### Options

Various Motor Options

Diesel Hydraulic Powered

3m<sup>3</sup> Feed Hopper

Hardox Wearplates in Feed Boot

Heavy Duty Belt

Chevron Belt

Powered Radial Drive

Hydraulic Axle Lift

Impact Rollers



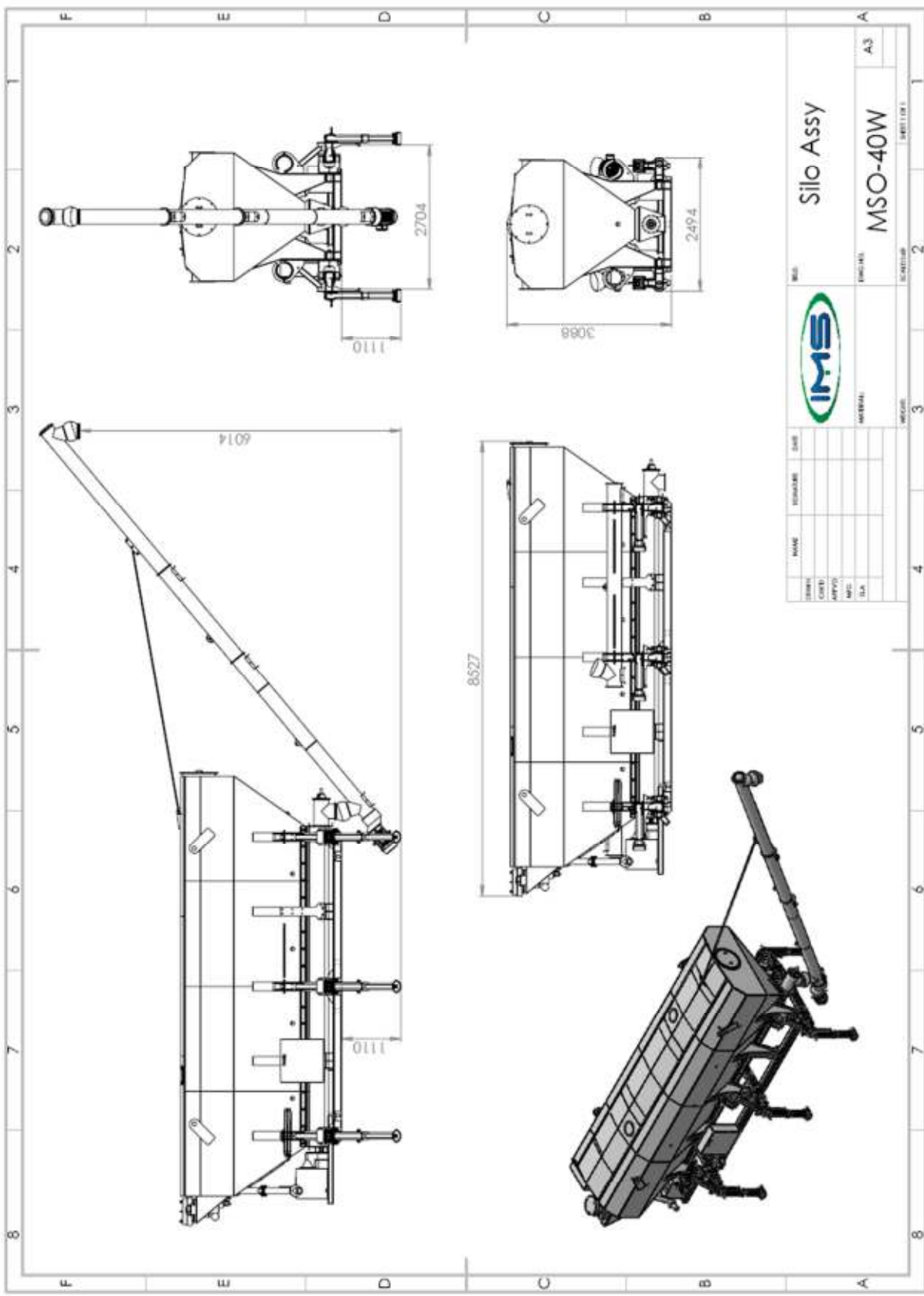


MSO-40

Silo



A leading manufacturer of screening and conveyor equipment,  
offer the MSO-40 Silo and Discharge Screw





### **Standard Features**

40 Tonne Silo

Static Unit

Manual Jacklegs

### **Options**

Mobile Unit

50 kVA Diesel Generator

### **Specifications**

Discharge Height	6.014M (19'8")
Operational Height	4.2M (13'8")
Operational Width	2.5M (8' 3")
Operational Length	8.6M (28'3")
Transport Height	3.1M (10'2")
Transport Width	2.5M (8' 3")
Transport Length	8.6M (28'3")
Weight	8000 kg (17637 lbs)



## Mobile Fan Separator



Irish Manufacturing Services Limited  
34a Dunroe Road, Clogher, Co. Tyrone, N. Ireland  
BT76 0Dz  
Tel. +44 (0)28 8554 9656 E-mail [info@ims-ltd.ie](mailto:info@ims-ltd.ie)  
website; [www.ims-ltd.ie](http://www.ims-ltd.ie)





## Mobile Press Screw Separator

### Separation Solutions for Processing Industries and Agriculture:

Biogas and Bio-Ethanol Plants, digestion plants:

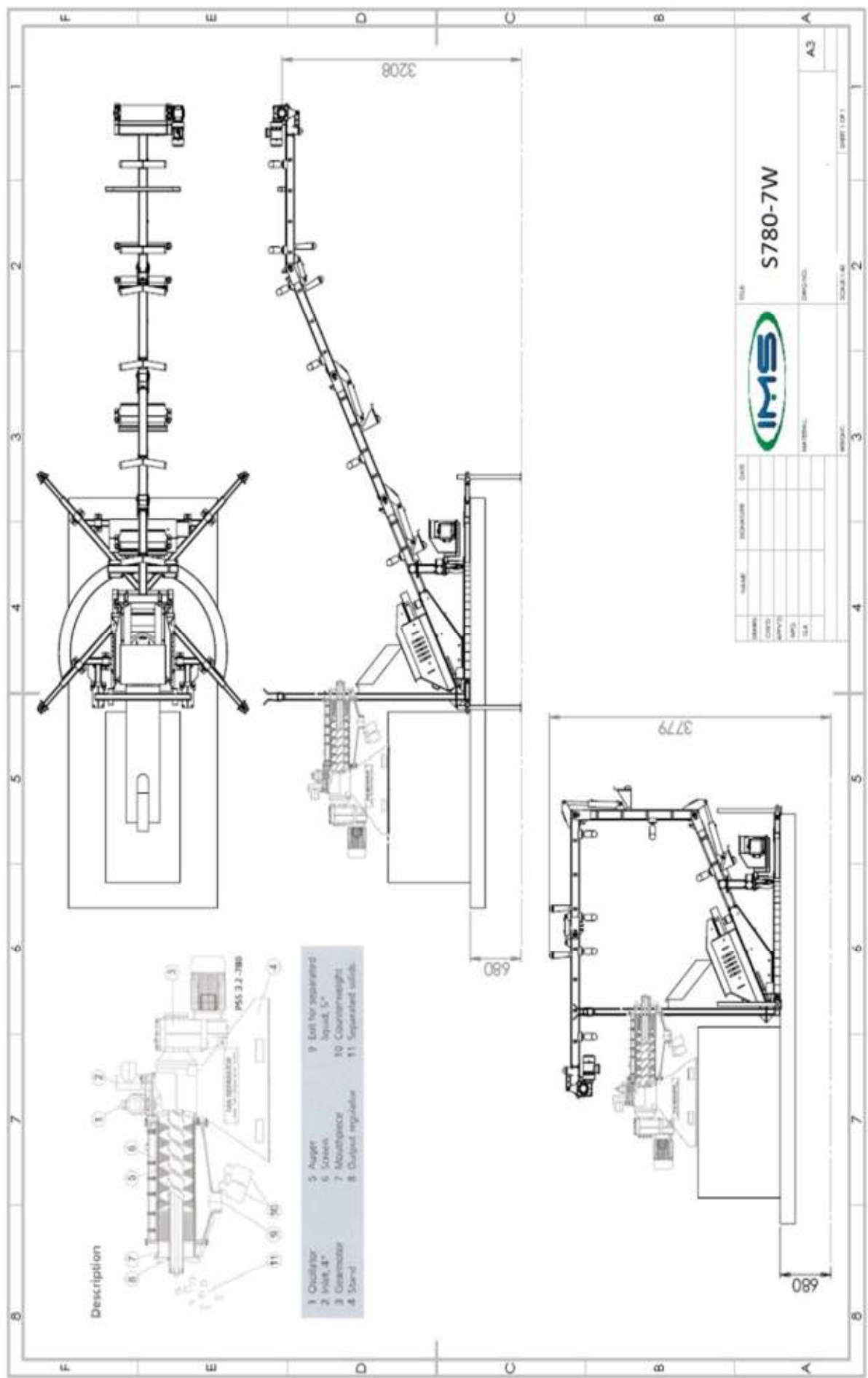
- Solid-liquid separation before and after biological treatment

Solid-liquid separation of pig, cattle and poultry manure for:

- Volume reduction
- Odour Reduction
- Nutrient extraction
- Easier irrigation
- Reuse of solids for bedding
- Reuse of liquids for flushing
- Cleaning of lagoons
- Composting of solids
- Further slurry treatment possibilities
- Separation of pig manure, straw, sand, shavings
- Separation of rendering products

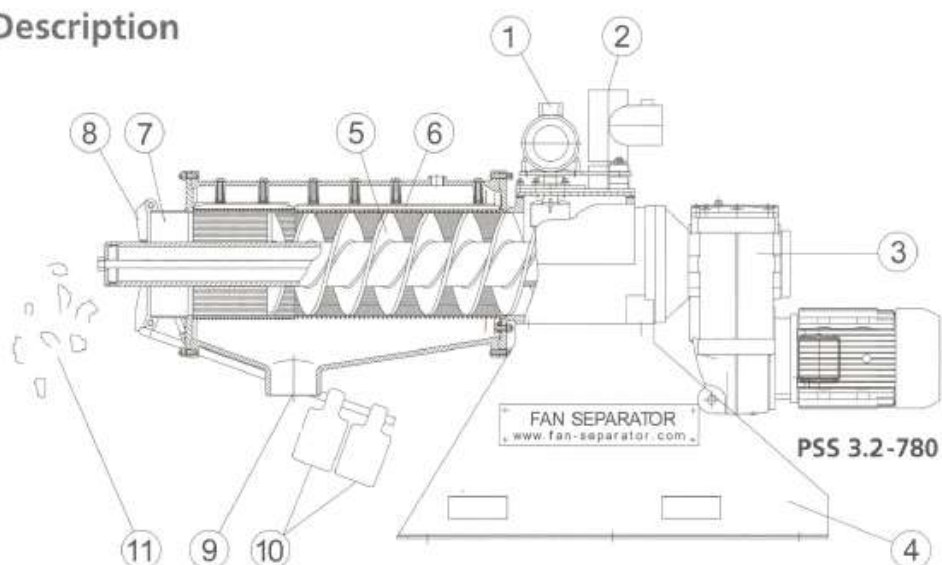
- FAN 3.2-780 Plug N' Play
- Full Road approval (ECWVTA)
- 7m Discharge Conveyor
- 180degree slewing
- Chevron Belt
- Folds over for transport position- within road height limit







## Description



1 Oscillator	5 Auger	9 Exit for separated liquid, 5"
2 Inlet, 4"	6 Screen	10 Counterweight
3 Gearmotor	7 Mouthpiece	11 Separated solids
4 Stand	8 Output regulator	

*Due to Irish Manufacturing Services Limited's policy of continuing product improvements, specifications are subject to change without notice or obligation. No representation is made that the products depicted herein comply with any laws, codes, rules, regulations or standards. Compliance is the responsibility of the user. Additional safety equipment may be required by the particular location and application of product.*

**Irish Manufacturing Services Limited**

**34a Dunroe Road, Clogher, Co. Tyrone, N. Ireland BT76 0Dz**

**Tel. +44 (0)28 8554 9656 E-mail [info@ims-ltd.ie](mailto:info@ims-ltd.ie) website; [www.ims-ltd.ie](http://www.ims-ltd.ie)**



[www.ims-ltd.ie](http://www.ims-ltd.ie)